

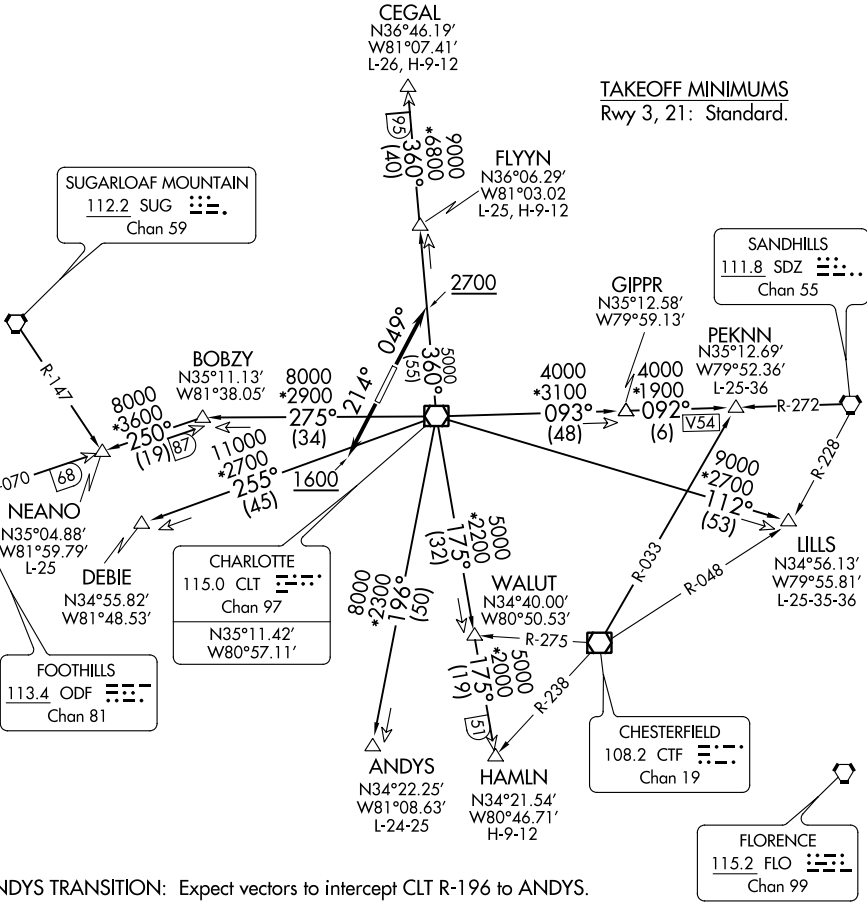
KNIGHTS TWO DEPARTURE

ASOS  
135.725  
CLNC DEL  
127.2  
UNICOM (CTAF)  
123.0  
CHARLOTTE DEP CON  
120.05 257.2

NOTE: For propeller aircraft only.  
NOTE: RADAR and DME required.  
NOTE: Turboprops: Operate in a manner that will result in best forward speed and climb rate.  
NOTE: Transponder code will be issued via Charlotte clearance delivery.

TOP ALTITUDE:  
3000

TAKEOFF MINIMUMS  
Rwy 3, 21: Standard.



ANDYS TRANSITION: Expect vectors to intercept CLT R-196 to ANDYS.  
CEGAL TRANSITION: Expect vectors to intercept CLT R-360 to CEGAL.  
DEBIE TRANSITION: Expect vectors to intercept CLT R-255 to DEBIE.  
FLYYN TRANSITION: Expect vectors to intercept CLT R-360 to FLYYN.  
HAMLN TRANSITION: Expect vectors to intercept CLT R-175 to HAMLN.  
LILLS TRANSITION: Expect vectors to intercept CLT R-112 to LILLS.  
NEANO TRANSITION: Expect vectors to intercept CLT R-275 to BOBZY then ODF R-070 to NEANO.  
PEKNN TRANSITION: Expect vectors to intercept CLT R-093 to GIPPR then SDZ R-272 to PEKNN.

(NARRATIVE ON FOLLOWING PAGE)

NOTE: Chart not to scale.

KNIGHTS TWO DEPARTURE