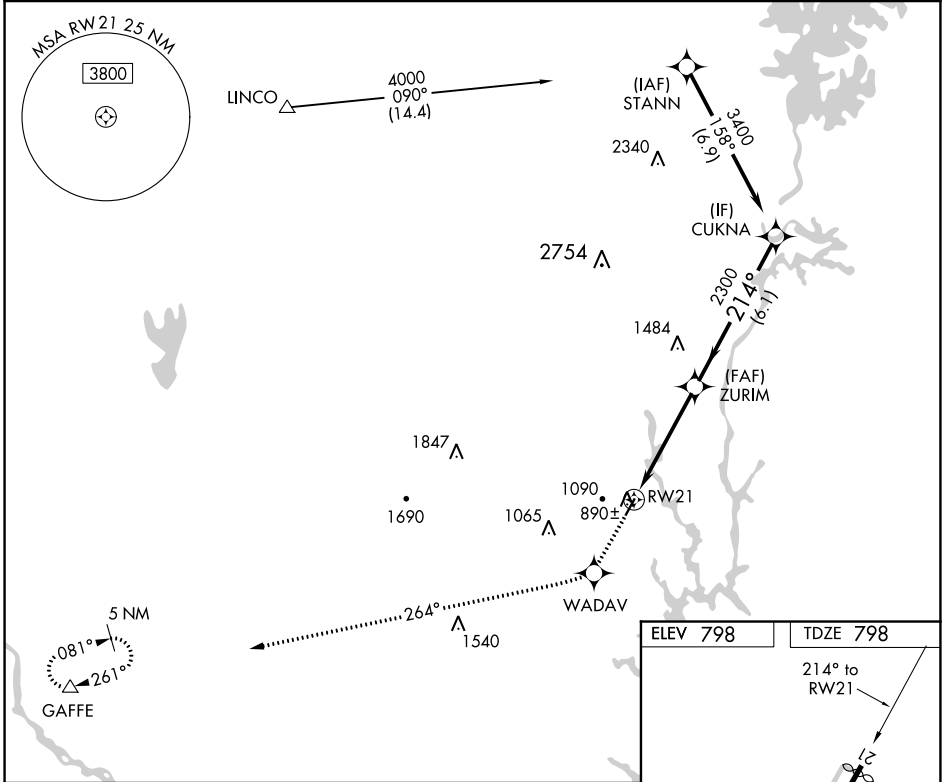


WAAS CH 50402 W21A	APP CRS 214°	Rwy Idg TDZE 798 Apt Elev 798
--	------------------------	---

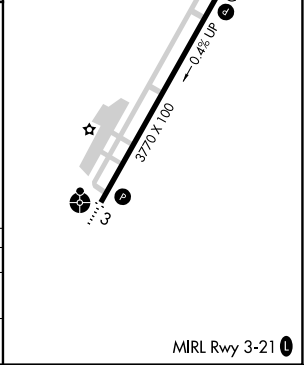
RNAV (GPS) RWY 21
GASTONIA MUNI (AKH)

RNP APCH. ▼ ▲ If local altimeter setting not received, use Charlotte/Douglas Intl altimeter setting and increase all DA/MDAs 40 feet. Rwy 21 helicopter visibility reduction below ¾ SM NA.	MISSED APPROACH: Climb to 3200 direct WADAV and via 264° track to GAFFE and hold.
--	---

ASOS 135.725	CHARLOTTE APP CON 120.05 257.2	CLNC DEL 127.2	UNICOM 123.0 (CTAF) 0
------------------------	--	--------------------------	---------------------------------



3200	WADAV	GAFFE	VGSI and RNAV glidepath not coincident (VGSI Angle 3.00/TCH 38).
↑	✧	tr 264°	△
CATEGORY	A	B	C
LPV DA	1111-1¼	313 (400-1¼)	NA
LNAV MDA	1420-1	622 (700-1)	1420-1¾ 622 (700-1¾)



SE-2, 31 DEC 2020 to 28 JAN 2021

SE-2, 31 DEC 2020 to 28 JAN 2021