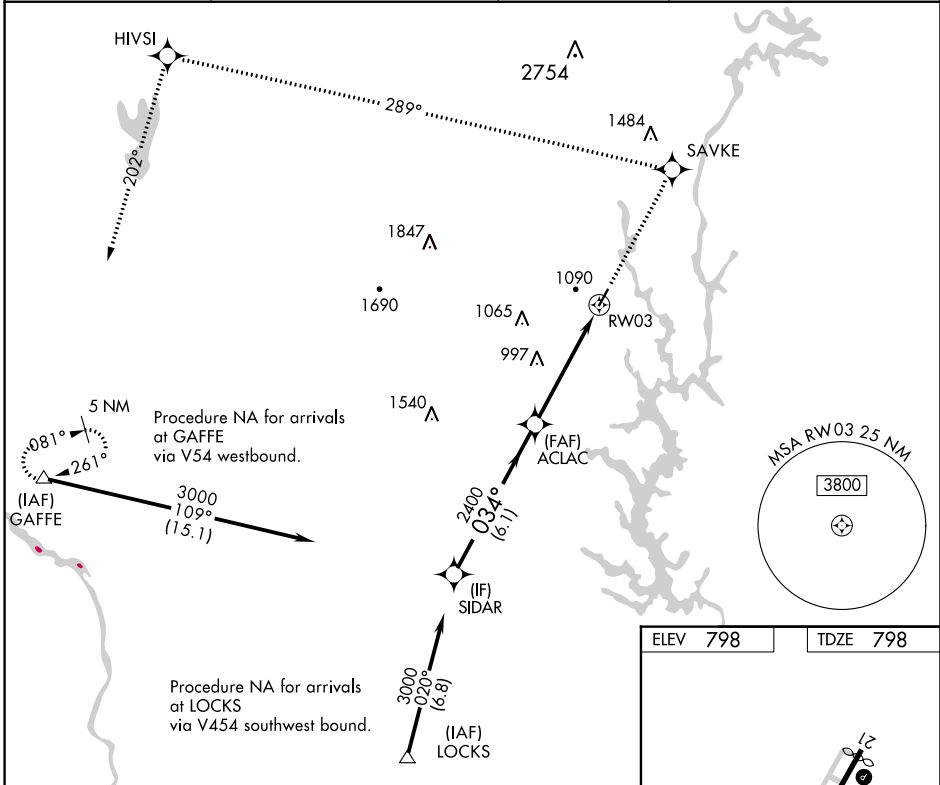


WAAS CH 90302 W03A	APP CRS 034°	Rwy Idg TDZE Apt Elev	3770 798 798
--	------------------------	-----------------------------	---

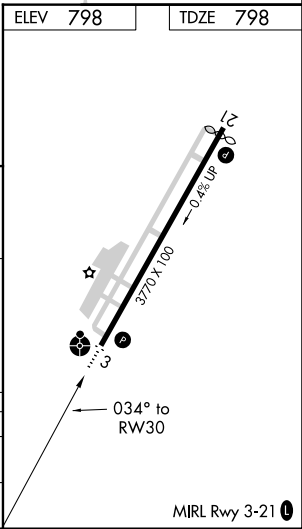
RNAV (GPS) RWY 3
GASTONIA MUNI (AKH)

RNP APCH. ▼ If local altimeter setting not received, use Charlotte Douglas Intl altimeter setting and increase all DAs/MDAs 40 feet. Inoperative table does not apply.	ODALS ● ⋮	MISSED APPROACH: Climb to 3200 direct SAVKE and via 289° track to HIVSI and 202° track to GAFFE and hold.
---	--------------	---

ASOS 135.725	CHARLOTTE APP CON 120.05 257.2	CLNC DEL 127.2	UNICOM 123.0 (CTAF) 0
------------------------	--	--------------------------	---------------------------------



VGSi and RNAV glidepath not coincident (VGSi Angle 3.00/TCH 26).				3200	SAVKE	HIVSI	GAFFE
Procedure Turn NA				↑	✱ tr 289°	✱ tr 202°	△
GP 3.00° TCH 40				3000	ACLAC	RW03	
				2400			
				6.1 NM	4.8 NM		
CATEGORY	A	B	C	D			
LPV DA	1118-1¼	320 (400-1¼)		NA			
LNAV MDA	1440-1	642 (700-1)	1440-1¾ 642 (700-1¾)	NA			



SE-2, 31 DEC 2020 to 28 JAN 2021

SE-2, 31 DEC 2020 to 28 JAN 2021