

WAAS CH <b>99517</b> <b>W05A</b>	APP CRS <b>048°</b>	Rwy Idg <b>5002</b> TDZE <b>996</b> Apt Elev <b>1013</b>
--	------------------------	--

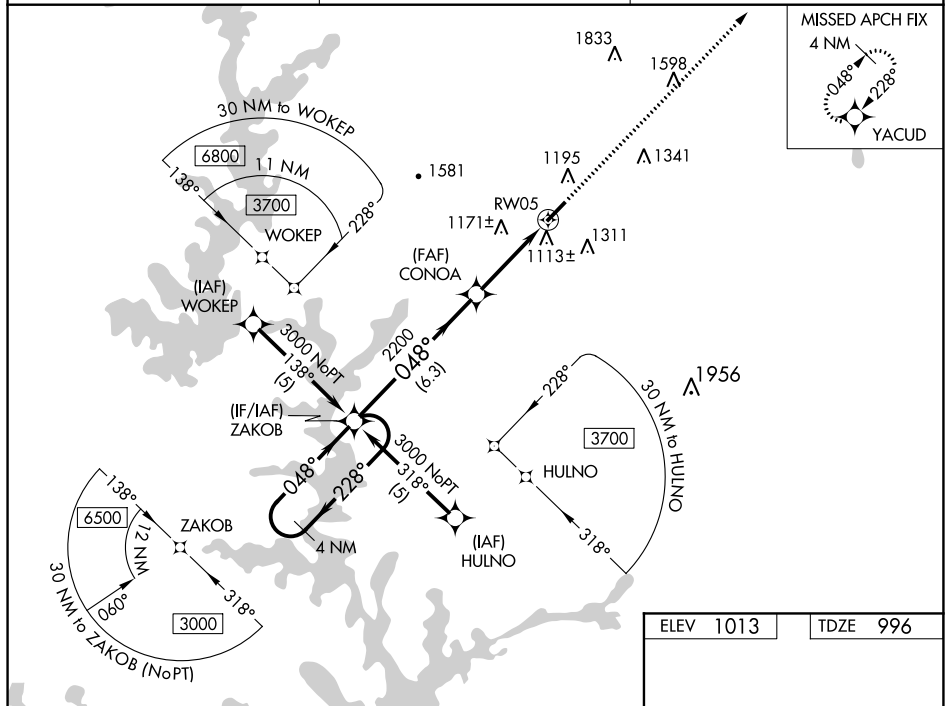
## RNAV (GPS) RWY 5

PICKENS COUNTY (LOK)

**▼** For uncompensated Baro-VNAV systems, LNAV/VNAV NA below -17°C (2°F) or above 46°C (114°F). DME/DME RNP-0.3 NA. Visibility reduction by helicopters NA. When local altimeter setting not received, use Clemsom altimeter setting and increase LPV DA to 1292, LNAV/VNAV DA to 1487, and all MDA 60 feet; increase LPV all Cats, LNAV and Circling Cats C and D visibility ¼ mile. Baro-VNAV NA when using Clemsom altimeter setting. VDP NA with Clemsom altimeter setting.

**MISSED APPROACH:**  
Climb to 4000 direct  
XACUD and hold

AWOS-3 <b>120.0</b>	GREER APP CON ★ <b>118.8 270.275</b>	UNICOM <b>122.8 (CTAF) ①</b>
------------------------	---	---------------------------------



4 NM Holding Pattern

3000

228°

048°

GP 3.00° TCH 45

VGSI and RNAV glidepath not coincident (VGSI Angle 3.00/TCH 35).

ZAKOB

CONOA

2200

2200

\*1.2 NM to RW05

RW05

4000

YACUD

\*RNAV only

6.3 NM

2.5 NM

1.2

