

APP CRS
230°

Rwy Idg
4351

TDZE
73

Apt Elev
73

RNAV (GPS) RWY 23

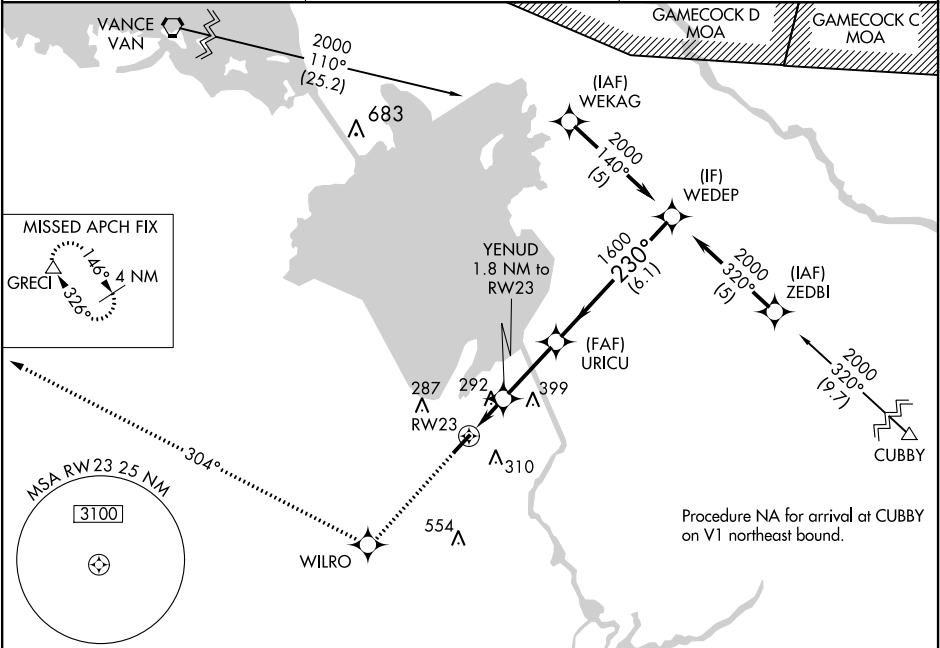
BERKELEY COUNTY (MKS)

NA

DME/DME RNP-0.3 NA. Procedure NA at night. Helicopter visibility reduction below 1 SM NA. When local altimeter setting not received, use Charleston AFB/Intl altimeter setting and increase all MDA 60 feet and increase LNAV Cat C/D and Circling Cat C visibility ¼ mile.

MISSED APPROACH: Climb to 2000 direct WILRO and via 304° track to GRECI and hold.

AWOS-3 119.175	CHARLESTON APP CON 119.3 379.925	UNICOM 123.05 (CTAF) 0
-------------------	-------------------------------------	---------------------------



ELEV 73

TDZE 73

230° to RW23

4351 X 75

2000	WILRO	304° tr	GRECI	VGSI and descent angles not coincident (VGSI Angle 3.00/TCH 44).	WEDEP
<div>YENUD 1.8 NM to RW23</div> <div>URICU</div> <div>230°</div> <div>2000</div> <div>680</div> <div>1600</div> <div>3.04°</div> <div>TCH 57</div> <div>1.8 NM</div> <div>2.8 NM</div> <div>6.1 NM</div>					
CATEGORY	A	B	C	D	
LNAV MDA	560-1	487 (500-1)	560-1¼ 487 (500-1¼)	560-1½ 487 (500-1½)	
CIRCLING	560-1 487 (500-1)	620-1 547 (600-1)	620-1½ 547 (600-1½)	640-2 567 (600-2)	

MIRL Rwy 5-23 0