

WAAS CH 63210 W05A	APP CRS 050°	Rwy Idg 4351 TDZE 73 Apt Elev 73
--	------------------------	---

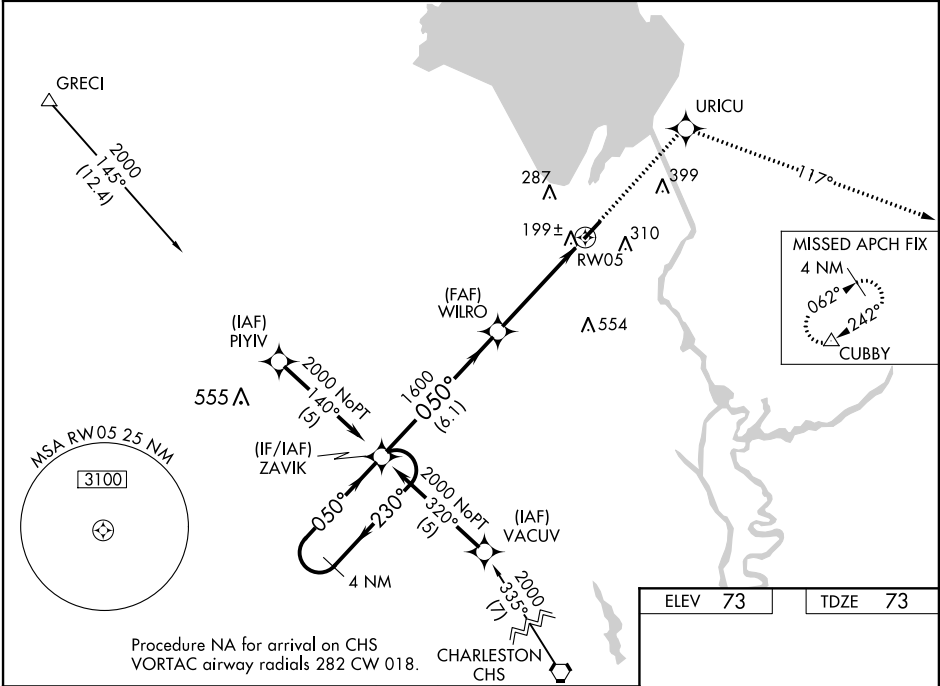
RNAV (GPS) RWY 5

BERKELEY COUNTY (MKS)

⚠ Circling to Rwy 23 NA at night. Baro-VNAV NA when using Charleston AFB/Intl altimeter setting. For uncompensated Baro-VNAV systems, LNAV/VNAV NA below -15° C (5° F) or above 48° C (118° F). DME/DME RNP-0.3 NA. Visibility reduction by helicopters NA. When local altimeter setting not received, use Charleston AFB/Intl altimeter setting and increase LPV DA to 451 feet; LNAV/VNAV DA to 513 feet, and all MDA 60 feet; increase LNAV and Circling Cat. C visibility ¼ mile. VDP NA when using Charleston AFB/Intl altimeter setting.

MISSED APPROACH: Climb to 2000 direct URICU and via 117° track to CUBBY and hold.

AWOS-3 119.175	CHARLESTON APP CON 119.3 379.925	UNICOM 123.05 (CTAF) 0
--------------------------	--	---



4 NM Holding Pattern				2000 ↑		URICU ✦		117° TRK		CUBBY △	
CATEGORY	A		B		C		D				
LPV DA	407-1¼				334 (400-1¼)						
LNAV/ VNAV DA	469-1½				396 (400-1½)						
LNAV MDA	520-1 447 (500-1)				520-1¼ 447 (500-1¼)			520-1½ 447 (500-1½)			
CIRCLING	520-1 447 (500-1)		620-1 547 (600-1)		620-1½ 547 (600-1½)			640-2 567 (600-2)			