

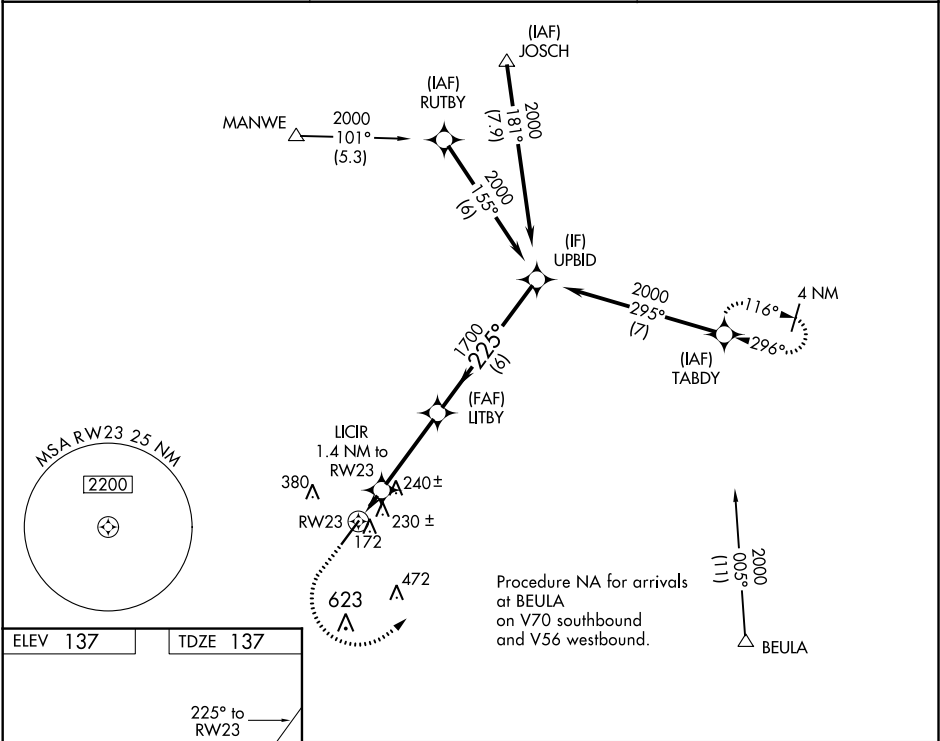
WAAS CH 69521 W23A	APP CRS 225°	Rwy Idg TDZE Apt Elev	6003 137 137
--	------------------------	-----------------------------	---

RNAV (GPS) RWY 23

DUPLIN COUNTY (DPL)

RNP APCH.	MISSED APPROACH: Climb to 1000 then climbing left turn to 2000 direct TABDY and hold.
For uncompensated Baro-VNAV systems, LNAV/VNAV NA below -15°C or above 54°C.	

AWOS-3 120.675	SEYMOUR JOHNSON APP CON★ 119.7 273.6	UNICOM 123.0 (CTAF) 0
--------------------------	--	---------------------------------



1000

↑

2000

↶

TABDY

✧

*LNAV only.

LICIR

1.4 NM to RW23

LITBY

1700

UPBD

2000

RW23

↶

*620

GP 3.00°

TCH 43

1.4 NM

3.4 NM

6 NM

CATEGORY	A	B	C	D
LPV DA	337-3/4 200 (200-3/4)			
LNAV/VNAV DA	407-7/8 270 (300-7/8)			
LNAV MDA	480-1 343 (400-1)			

REIL Rws 5 and 23

0

MIRL Rwy 5-23

0