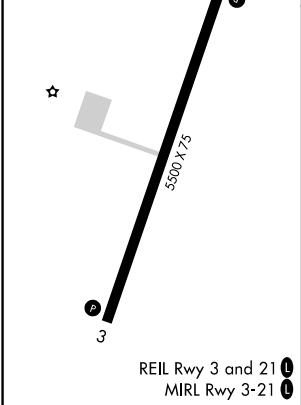
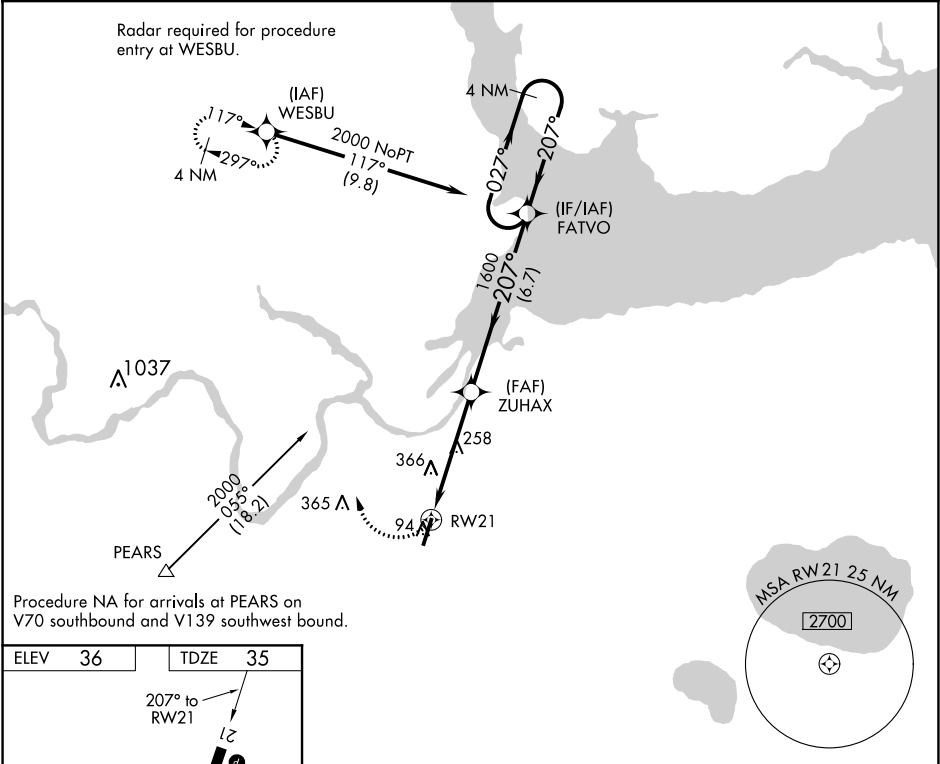


WAAS CH 63125 W21A	APP CRS 207°	Rwy Idg TDZE 35 Apt Elev 36
--	------------------------	---

RNAV (GPS) RWY 21
PLYMOUTH MUNI (PMZ)

<p>⚠ NA Use Northeastern Rgnl altimeter setting; when not received, use Coastal Carolina Rgnl altimeter setting and increase all MDA 80 feet and increase Cat C visibility ¼ mile. When VGSi inop, procedure NA at night. DME/DME RNP-0.3 NA.</p>	<p>MISSED APPROACH: Climbing right turn to 2000 direct WESBU and hold.</p>
--	--

CHERRY POINT APP CON 119.35 377.175	UNICOM 122.8 (CTAF) 0
---	---------------------------------



2000	WESBU	VGSi and descent angles not coincident (VGSi Angle 4.00°/TCH 28).		4 NM
		FATVO	Holding Pattern	
		ZUHAX	027° → 2000	
		RWY 21	← 207°	
			1600	
			3.00° TCH 40	
			4.8 NM	
			6.7 NM	
CATEGORY	A	B	C	D
LP MDA	600-1	565 (600-1)	600-1½ 565 (600-1½)	NA
LNAV MDA	660-1	625 (700-1)	660-1¾ 625 (700-1¾)	NA
CIRCLING	660-1	624 (700-1)	720-2 684 (700-2)	NA

SE-2, 31 DEC 2020 to 28 JAN 2021

SE-2, 31 DEC 2020 to 28 JAN 2021