

WAAS
CH **93825**
W03A

APP CRS
027°

Rwy Idg **5500**
TDZE **36**
Apt Elev **36**

RNAV (GPS) RWY 3

PLYMOUTH MUNI (PMZ)

▼

Use Northeastern Rgnl altimeter setting; when not received, use Coastal Carolina Rgnl altimeter setting and increase all MDA 80 feet and increase Cat C visibility ¼ mile.

▲

NA

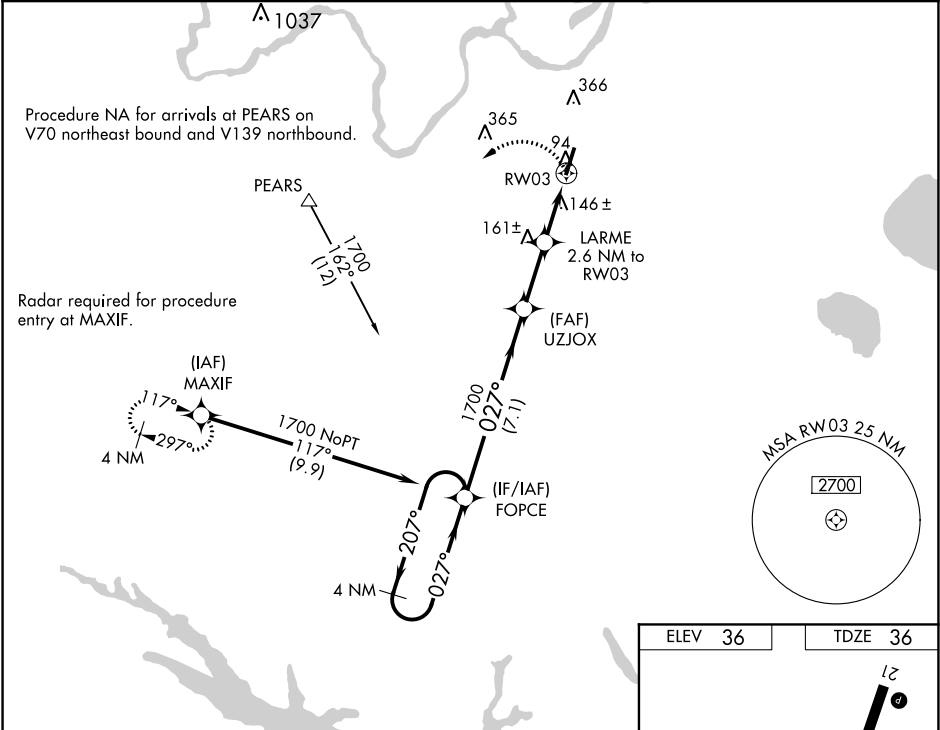
When VGSi inop, procedure NA at night. DME/DME RNP-0.3 NA.

Visibility reduction by helicopters NA.

MISSED APPROACH: Climbing left turn to 2000 direct MAXIF and hold.

CHERRY POINT APP CON
119.35 377.175

UNICOM
122.8 (CTAF) **1**



4 NM Holding Pattern

VGSI and descent angles not coincident (VGSI Angle 4.00/TCH 30).

2000 MAXIF

FOFCE

UZJOX

LARME 2.6 NM to RW03

RW03

1700

207°

027°

027°

1700

900

7.1 NM

2.5 NM

2.6 NM

CATEGORY	A	B	C	D
LP MDA	440-1	404 (500-1)	440-1½ 404 (500-1½)	NA
LNAV MDA	460-1	424 (500-1)	460-1¼ 424 (500-1¼)	NA
CIRCLING	520-1	484 (500-1)	720-2 684 (700-2)	NA

027° to RW03

REIL Rwy 3 and 21

MIRL Rwy 3-21