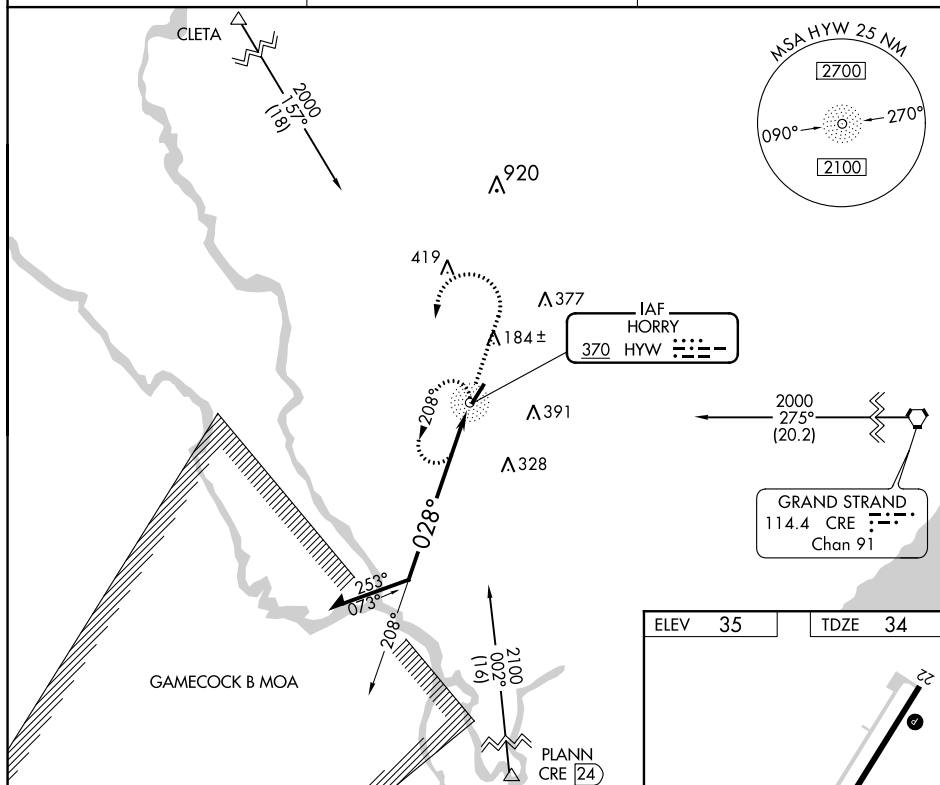


NDB RWY 4  
CONWAY-HORRY COUNTY (HYW)

**MISSED APPROACH:** Climb to 1600 then climbing left turn to 2000 direct HYW NDB and hold.

UNICOM  
122.7 (CTAF) **L**

1600	2000	HYW
------	------	-----

CATEGORY	A	B	C	D
S-4	620-1	586 (600-1)	620-1 <sup>3</sup> / <sub>4</sub>	586 (600-1 <sup>3</sup> / <sub>4</sub> )
CIRCLING	620-1	585 (600-1)	620-1 <sup>3</sup> / <sub>4</sub> 585 (600-1 <sup>3</sup> / <sub>4</sub> )	620-2 585 (600-2)

Diagram illustrating the layout of Runway 4-22, showing the REIL (Runway End Identifier Lights) and MRL (Middle Row Lights) segments. The diagram includes the following details:

- ELEV 35** and **TDZE 34** are indicated at the top.
- The runway is labeled **4-22** at both ends.
- The runway width is **140' x 75'**.
- The **REIL** (Runway End Identifier Lights) is shown as a series of lights along the runway edge.
- The **MRL** (Middle Row Lights) is shown as a series of lights along the runway edge.
- The **NDB** (Non-Directional Beacon) is located near the runway, with a bearing of **028° to NDB** indicated.
- A star symbol is located near the runway.