

WAAS  
CH **90424**  
**W22A**

APP CRS  
**220°**

Rwy Idg  
TDZE **35**  
Apt Elev **35**

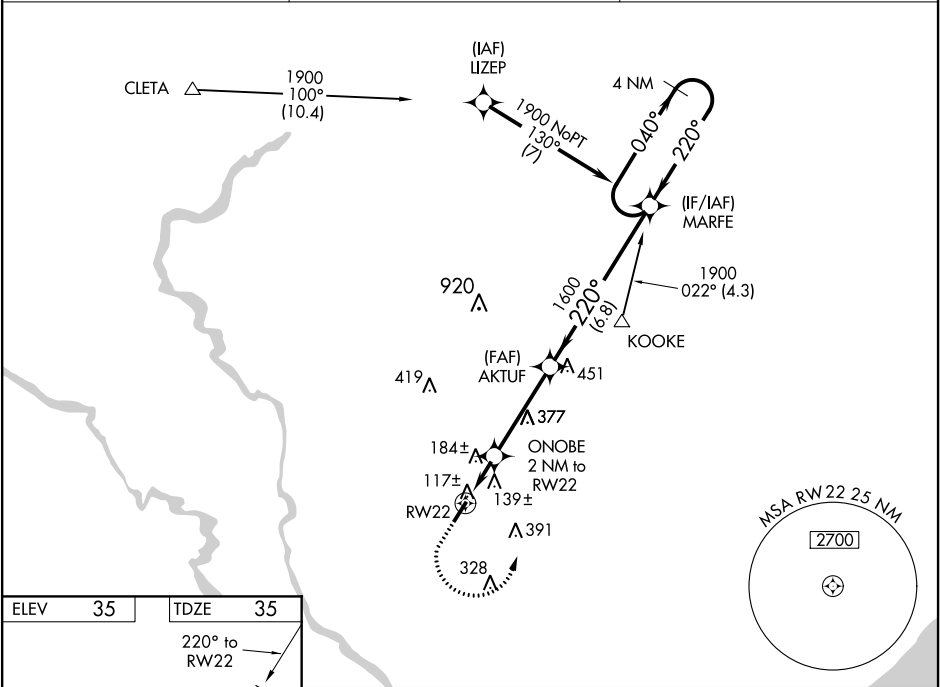
**RNAV (GPS) RWY 22**

CONWAY-HORRY COUNTY (HYW)

▼ For uncompensated Baro-VNAV sytems, LNAV/VNAV NA below -1.5°C (5°F) or above 43°C (109°F). DME/DME RNP-0.3 NA. Helicopter visibility reduction below 1 SM NA. When local altimeter setting not received, use Myrtle Beach altimeter setting and increase all DA 32 feet and all MDA 40 feet; increase LNAV/VNAV all Cats visibility 1/8 mile and LNAV Cats C and D visibility 1/4 mile. Baro-VNAV NA when using Myrtle Beach altimeter setting. When VGSI inop, Straight-in/Circling Rwy 22 procedure NA at night.

▲ MISSED APPROACH: Climb to 500 then climbing left turn to 1900 direct MARFE and hold.

AWOS-3 <b>119.525</b>	MYRTLE BEACH APP CON ★ <b>127.4 257.95</b>	UNICOM <b>122.7 (CTAF) 0</b>
--------------------------	---	---------------------------------



ELEV 35 TDZE 35

220° to RW22

4401 x 75

REIL Rwy 4 and 22  
MIRL Rwy 4-22 0

500	1900	MARFE	VGSI and RNAV glidepath not coincident (VGSI Angle 4.00/TCH 46).	4 NM Holding Pattern
*LNAV only.	ONOBE 2 NM to RW22	AKTUF	MARFE	GP 3.00° TCH 40
2 NM	3.7 NM	6.8 NM		
CATEGORY	A	B	C	D
LPV DA	285-1 250 (300-1)			
LNAV/VNAV DA	438-1 3/8 403 (500-1 3/8)			
LNAV MDA	440-1 405 (500-1)		440-1 1/8 405 (500-1 1/8)	
CIRCLING	520-1 485 (500-1)		520-1 1/2 600-2 485 (500-1 1/2) 565 (600-2)	