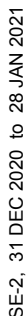


RNAV (GPS) RWY 22

FAIRFIELD COUNTY (FDW)

MISSED APPROACH: Climb to 2300 direct WBSU and hold.

UNICOM
123.05 (CTAF) **L**

2300 WBSU VGSI and RNAV glidepath not coincident. 4 NM Holding Pattern

KICKY

*RNAV only.

STUPE 2000

225°

045°

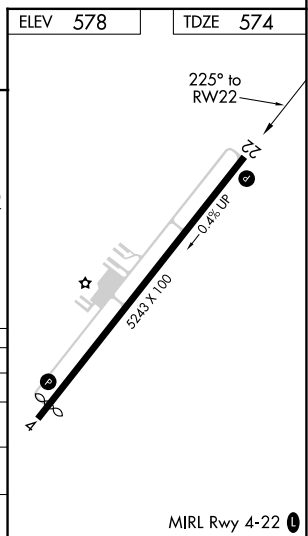
2300


RW22

*1.3 NM to RW22

1.3 NM 3.1 NM 6.8 NM

GP 3.00° TCH 40



CATEGORY		A	B	C	D
LPV	DA	824- $\frac{7}{8}$ 250 (300- $\frac{7}{8}$)			
LNAV/ VNAV	DA	824- $\frac{7}{8}$ 250 (300- $\frac{7}{8}$)			
LNAV	MDA	1000-1	426 (500-1)	1000-1 $\frac{1}{4}$	426 (500-1 $\frac{1}{4}$)
 CIRCLING		1000-1 422 (500-1)	1040-1 462 (500-1)	1080-1 $\frac{1}{2}$ 502 (600-1 $\frac{1}{2}$)	1360-2 $\frac{1}{2}$ 782 (800-2 $\frac{1}{2}$)