

WAAS CH 69326 W24A	APP CRS 238°	Rwy Idg TDZE 713 Apt Elev 733
--	------------------------	---

RNAV (GPS) RWY 24

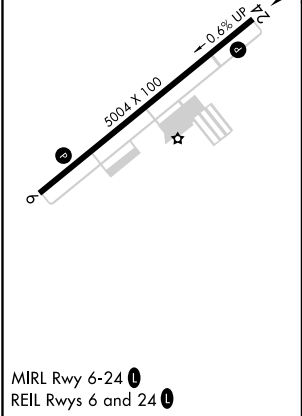
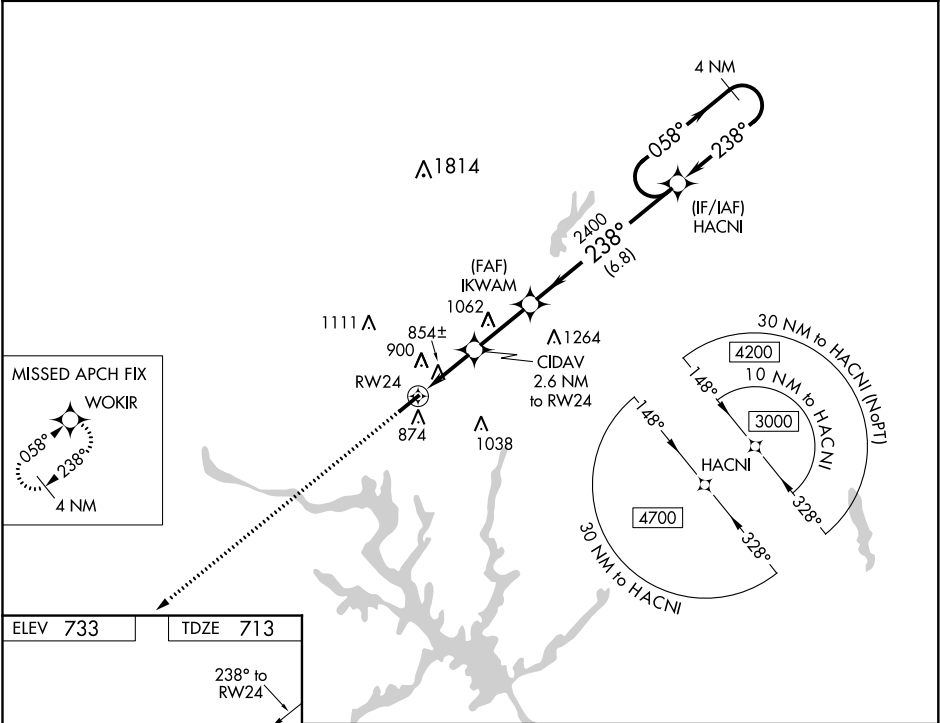
DAVIDSON COUNTY (E.XX)

⚠

For uncompensated Baro-VNAV systems, LNAV/VNAV NA below -16°C (4°F) or above 54°C (130°F). When local altimeter setting not received, use Salisbury altimeter setting and increase all DA 37 feet and all MDA 40 feet, increase LPV, LNAV/VNAV all Cats and Cat C Circling visibility ½ mile, LNAV Cat C visibility ¼ mile. DME/DME RNP-0.3 NA. Helicopter visibility reduction below ¾ SM NA. Baro-VNAV and VDP NA when using Salisbury altimeter setting.

MISSED APPROACH: Climb to 3000 direct WOKIR and hold.

AWOS-3 119.825	GREENSBORO APP CON 126.6 327.075	GCO 135.075	UNICOM 122.8 (CTAF) 0
--------------------------	--	-----------------------	---------------------------------



3000	WOKIR	VGSI and RNAV glidepath not coincident (VGSI Angle 3.00/TCH 31).		4 NM Holding Pattern
*LNAV only		CIDAV 2.6 NM to RW24	IKWAM 2400	HACNI
RW24		*1.5 NM to RW24	*1580	2400
1.5 NM		1.1 NM	2.6 NM	6.8 NM
CATEGORY	A	B	C	D
LPV DA	1026-1	313 (300-1)		NA
LNAV/VNAV DA	1150-1½	437 (500-1½)		NA
LNAV MDA	1220-1	507 (500-1)	1220-1⅜ 507 (500-1⅜)	NA
CIRCLING	1220-1	487 (500-1)	1220-1½ 487 (500-1½)	NA