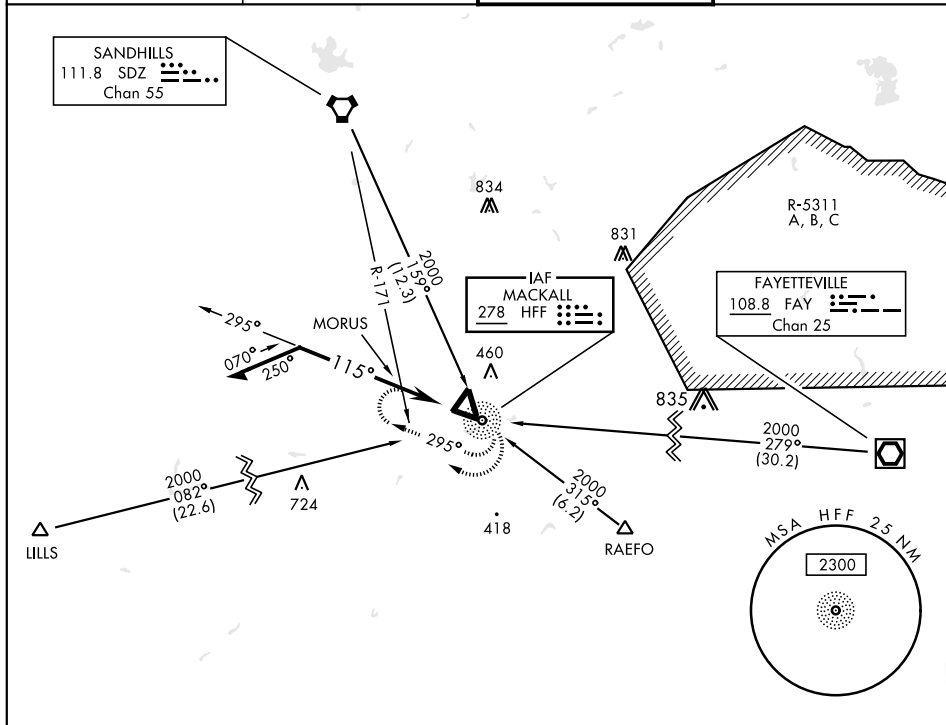


NDB HFF 278	APCH CRS 115°	Rwy Idg 4794 TDZE 375 Arpt Elev 376	AL-6315 [USA]	MACKALL AAF (HFF)
-----------------------	-------------------------	--	---------------	-------------------

A NA Procedure not authorized at night when tower closed.
When local altimeter setting not available, use SIMMONS
AAF altimeter setting and increase all MDA 120 feet.

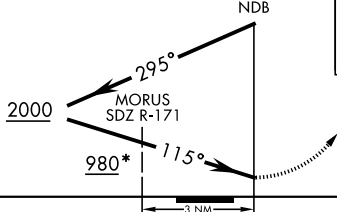
MISSED APPROACH: Climbing right turn to 2000 in HFF NDB holding pattern.

ATIS 141.4	FAYETTEVILLE APP CON 127.8 343.725	MACKALL TOWER ★ 121.0 254.4	GND CON 128.35 251.05
---------------	---------------------------------------	--------------------------------	--------------------------



* 1100 when using
Simmons AAF
altimeter setting

Remain
within 10 NM



CATEGORY	A	B	C	D
S-11	980-1	605 (700-1)	980-1½ 605 (700-1½)	980-2 605 (700-2)
CIRCLING	980-1	604 (700-1)	980-1½ 604 (700-1½)	980-2 604 (700-2)
NDB/VOR MINIMUMS				
S-11	860-1	485 (500-1)	860-1½ 485 (500-1½)	860-1½ 485 (500-1½)
CIRCLING	860-1	484 (500-1)	860-1½ 484 (500-1½)	940-2 564 (600-2)

