

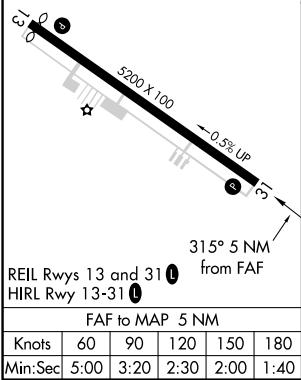
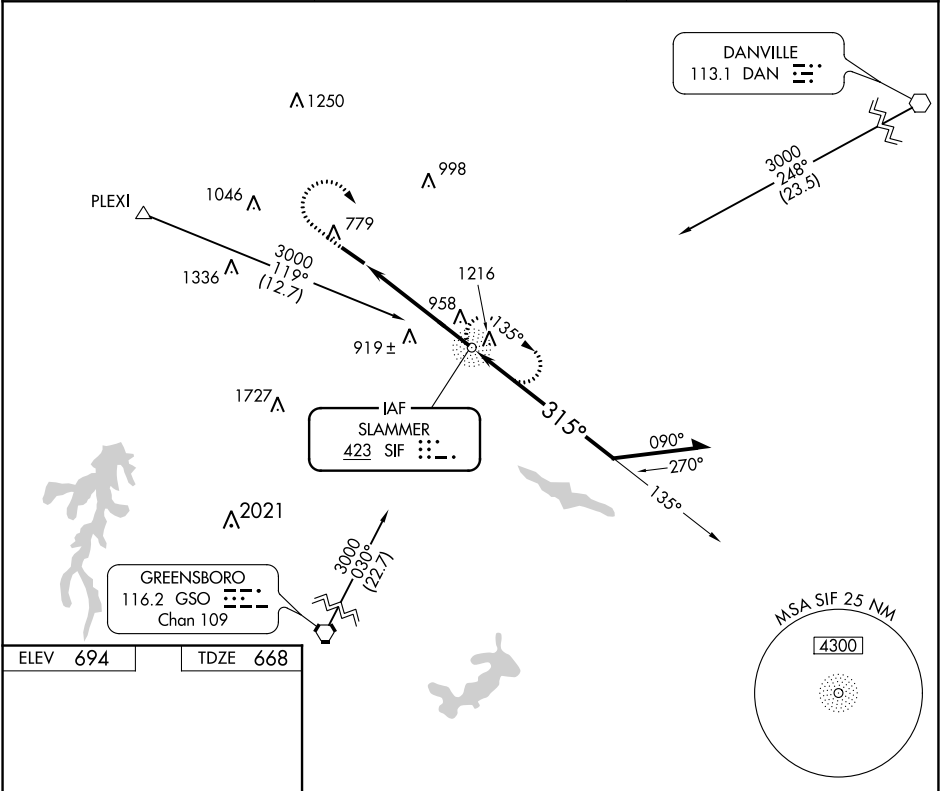
NDB SIF	APP CRS	Rwy Idg
<b>423</b>	<b>315°</b>	<b>5200</b>
		TDZE <b>668</b>
		Apt Elev <b>694</b>

NDB RWY 31

ROCKINGHAM COUNTY NC SHILOH (SIF')

<p><b>▼</b> Rwy 31 helicopter visibility reduction below 1 SM NA.</p> <p><b>▲</b> Procedure NA at night.</p>	<p>MISSED APPROACH: Climb to 1600 then climbing right turn to 2600 direct SIF NDB and hold.</p>
--	---

AWOS-3 <b>119.775</b>	GREENSBORO APP CON <b>124.35 269.225</b>	UNICOM <b>122.8 (CTAF) 0</b>
--------------------------	---	---------------------------------



1600	2600	SIF	VGSI and descent angles not coincident (VGSI Angle 4.00/TCH 40).	
		SIF NDB	135°	2600
			315°	2400
			≤ 3.20°	TCH 40
			5 NM	
CATEGORY	A	B	C	D
S-31	1220-1	552 (600-1)	1220-1½ 552 (600-1½)	1220-1¾ 552 (600-1¾)
CIRCLING	1280-1	586 (600-1)	1320-1¾ 626 (700-1¾)	1320-2 626 (700-2)

SE-2, 31 DEC 2020 to 28 JAN 2021

SE-2, 31 DEC 2020 to 28 JAN 2021