

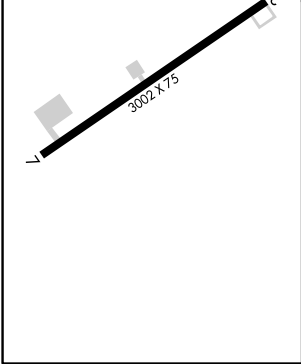
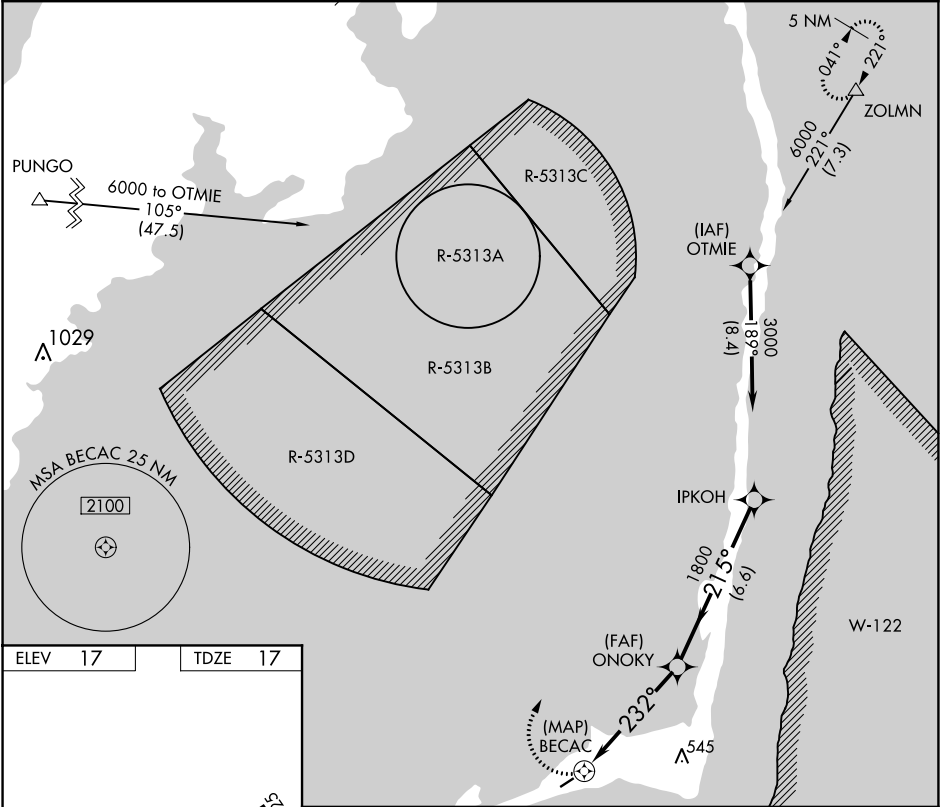
APP CRS	Rwy Idg	3002
232°	TDZE	17
	Apt Elev	17

RNAV (GPS) RWY 25

BILLY MITCHELL (HSE)

<div><div>Procedure NA at night. GPS or RNP-0.3 required. DME/DME RNP-0.3 NA.</div></div>	MISSED APPROACH: Climbing right turn to 6000 via course 032° to ZOLMN WP and hold.
---	---

ASOS 118.375	CHERRY POINT APP CON 119.75 360.775	CTAF 122.9
-----------------	--	---------------



6000

crs 032°

ZOLMN

△

ONOKY

IPKOH

3000

BECAC

232°

3.00°

TCH 40

1800

215°

Procedure Turn NA

0.5

5 NM

6.6 NM

CATEGORY	A	B	C	D
LNAV MDA	520-1	503 (600-1)	520-1½ 503 (600-1½)	NA
CIRCLING	560-1	543 (600-1)	560-1½ 543 (600-1½)	NA

SE-2, 31 DEC 2020 to 28 JAN 2021

SE-2, 31 DEC 2020 to 28 JAN 2021