

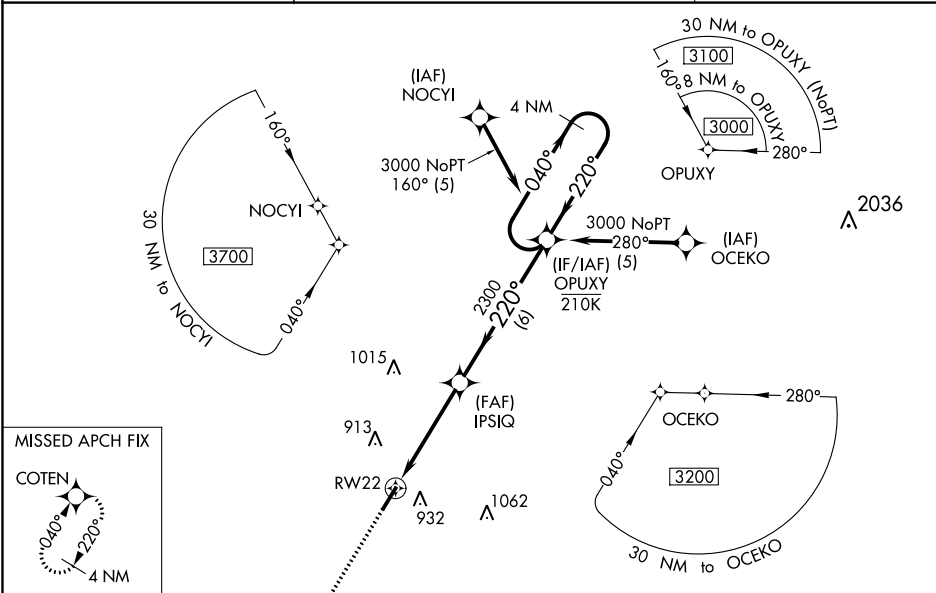
WAAS CH <b>40335</b> <b>W22A</b>	APP CRS <b>220°</b>	Rwy Idg <b>5000</b> TDZE <b>615</b> Apt Elev <b>615</b>
--	------------------------	---

**RNAV (GPS) RWY 22**  
SILER CITY MUNI (SCR)

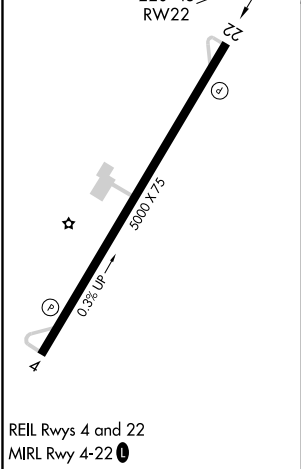
**⚠** For uncompensated Baro-VNAV systems, LNAV/VNAV NA below -16°C (4°F) or above 54°C (130°F). DME/DME RNP-0.3 NA. Procedure NA at night. Baro-VNAV NA when using Asheville altimeter setting. Rwy 4, 22 helicopter visibility reduction below 1 SM NA. When local altimeter setting not received, use Asheville altimeter setting: increase all DA 53 feet and all MDA 60 feet; increase LPV all Cats, LNAV/VNAV all Cats, and LNAV Cat C visibilities 1/8 mile, increase Circling Cat C visibility 1/4 mile.

**MISSED APPROACH:**  
Climb to 3000 direct COTEN and hold.

AWOS-3 <b>125.775</b>	GREENSBORO APP CON <b>126.6 327.075</b>	UNICOM <b>122.7 (CTAF) 0</b>
--------------------------	--	---------------------------------



ELEV <b>615</b>	TDZE <b>615</b>
-----------------	-----------------



3000	COTEN	VGSI and RNAV glidepath not coincident (VGSI Angle 3.00/TCH 30).	4 NM Holding Pattern
OPUXY	IPSIQ	2300	2300
RW22	4.4 NM	6 NM	GP 3.50° TCH 40
220° to RW22	220°	040°	3000
0.3% UP	3000 x 7.5		
REIL Rwy 4 and 22			
MIRL Rwy 4-22 0			
CIRCLING	1240-1	625 (700-1)	NA
LPV DA	954-1	339 (400-1)	NA
LNAV/VNAV DA	1140-1 5/8	525 (600-1 5/8)	NA
LNAV MDA	1160-1	545 (600-1)	NA
		1160-1 5/8	545 (600-1 5/8)
		1240-1 3/4	625 (700-1 3/4)

SE-2, 31 DEC 2020 to 28 JAN 2021

SE-2, 31 DEC 2020 to 28 JAN 2021