

WAAS CH 48819 W03A	APP CRS 032°	Rwy Idg TDZE 147 Apt Elev 164	5500
--	------------------------	---	-------------

RNAV (GPS) RWY 3

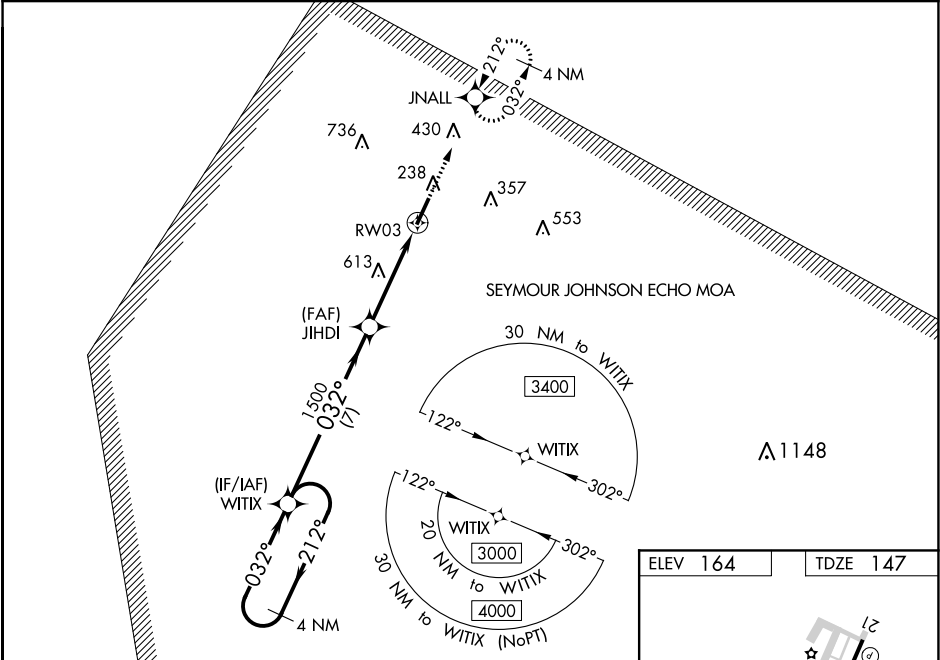
JOHNSTON RGNL (JNX)

⚠ For uncompensated Baro-VNAV systems, LNAV/VNAV NA below -1.5°C (5°F) or above 54°C (130°F). DME/DME RNP-0.3 NA. When local altimeter setting not received, use Erwin altimeter setting and increase LPV DA to 447 feet, LNAV/VNAV DA to 1020 feet, and all LNAV/VNAV visibilities ½ mile. Increase all MDA 60 feet; increase visibility Cat B, C, and D ¼ mile. Baro-VNAV and VDP NA with Erwin altimeter setting. Inop table does not apply to LNAV/VNAV when using Erwin altimeter setting. For inop MALSR when using Erwin altimeter setting, increase LPV all Cats visibility to 1 mile and LNAV Cats C/D visibility to 2½ miles.

MALSR

MISSED APPROACH:
Climb to 3400 direct JNALL and hold, continue climb-in-hold to 3400.

AWOS-3 120.225	RALEIGH APP CON 125.3 353.675	GCO 135.075	UNICOM 122.725 (CTAF) 0
--------------------------	---	-----------------------	-----------------------------------



4 NM Holding Pattern					3400 JNALL	
					*2.2 NM to RW03	
GP 3.00° TCH 45					*LNAV only.	
7 NM 1.9 NM 2.2 NM						
CATEGORY	A	B	C	D		
LPV DA	397-½ 250 (300-½)					
LNAV/VNAV DA	970-2½ 823 (900-2½)					
LNAV MDA	880-½ 733 (800-½) 880-1⅝ 733 (800-1⅝)					
CIRCLING	880-1 716 (800-1) 920-2¼ 756 (800-2¼) 1100-3 936 (1000-3)					

