

LOC I-HNZ
109.75

APP CRS
060°

Rwy Idg
TDZE **526**
Apt Elev **526**

LOC RWY 6
HENDERSON-OXFORD (HNZ)

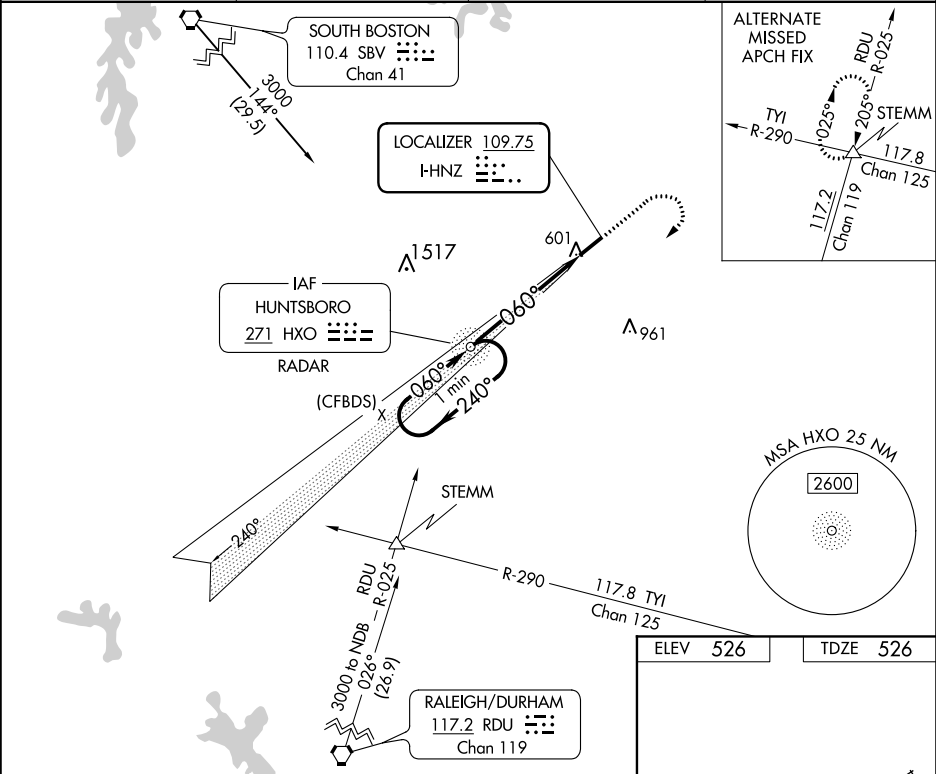
ADF or RADAR required. ADF or RADAR required for procedure entry.

▼

Rwy 6 helicopter visibility reduction below ¾ SM NA. When local altimeter setting not received, use Roxboro altimeter setting and increase all MDA 80 feet; increase S-6 Cat C/D visibility ½ SM and Circling Cat C and D visibility ¼ SM.

MISSED APPROACH: Climb to 1200 then climbing right turn to 2600 direct HXO NDB/RADAR and hold.

AWOS-3 118.625	RALEIGH APP CON 132.35 256.9	GCO 135.075	UNICOM 122.8(CTAF) 0
--------------------------	--	-----------------------	--------------------------------



One Minute Holding Pattern

HXO NDB RADAR

1200 2600 HXO

VGSI and descent angles not coincident (VGSI Angle 3.50/TCH 27).

2600 2400 060° 240° 3.36° TCH 53 5.2 NM

ELEV 526 TDZE 526

REIL Rwy 6 0 MIREL Rwy 6-24 0

FAF to MAP 5.2 NM

Knots	60	90	120	150	180
Min:Sec	5:12	3:28	2:36	2:05	1:44