

WAAS CH 63009 W24A	APP CRS 240°	Rwy Idg TDZE Apt Elev	5500 523 526
--	------------------------	-----------------------------	---

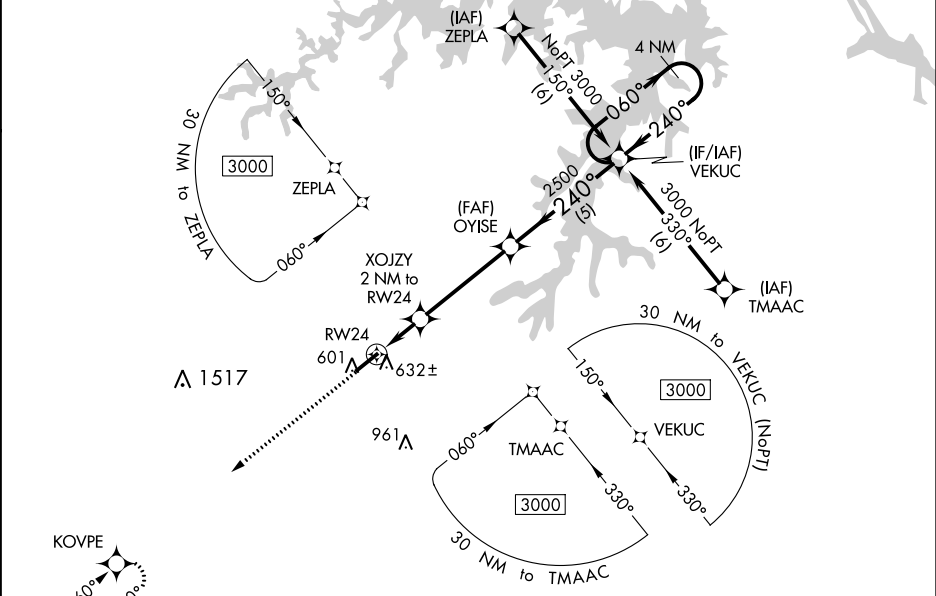
RNAV (GPS) RWY 24

HENDERSON-OXFORD (HNZ)

▼ For uncompensated Baro-VNAV systems, LNAV/VNAV NA below -16°C (4°F) or above 54°C (130°F).
⚠ DME/DME RNP-0.3 NA. When local altimeter setting not received, use Roxboro altimeter setting and increase all DA 64 feet, and all MDA 80 feet; increase LPV all Cnts visibility ¾ mile, LNAV/VNAV all Cnts and Circling Cnts C and D visibility ¼ mile, and LNAV Cnts C and D ¾ mile. Helicopter visibility reduction below ¾ SM NA. Baro-VNAV and VDP NA when using Roxboro altimeter setting.

MISSED APPROACH:
Climb to 3000 direct KOVPE and hold.

AWOS-3 118.625	RALEIGH APP CON 132.35 256.9	GCO 135.075	UNICOM 122.8(CTAF) 0
--------------------------	--	-----------------------	--------------------------------



ELEV 526 TDZE 523

3000

KOVPE

VGSI and RNAV glidepath not coincident (VGSI Angle 3.75/TCH 36).

VEKUC Holding Pattern

4 NM

060° → 3000

← 240°

GP 3.00° TCH 40

1180*

2500

240°

OYISE 2500

XOJZY 2 NM to RW24

*0.9 NM to RW24

*LNAV only.

RW24

0.9 1.1 NM 4.1 NM 5 NM

CATEGORY	A	B	C	D
LPV DA		773-7/8	250 (300-7/8)	
LNAV/VNAV DA		813-1	290 (300-1)	
LNAV MDA		900-1	377 (400-1)	
CIRCLING	960-1 434 (500-1)	980-1 454 (500-1)	1100-1½ 574 (600-1½)	1280-2½ 754 (800-2½)

REIL Rwy 6 0

MIRL Rwy 6-24 0