

WAAS CH <b>69408</b> <b>W34A</b>	APP CRS <b>342°</b>	Rwy Idg TDZE Apt Elev	<b>5498</b> <b>299</b> <b>300</b>
--	------------------------	-----------------------------	---

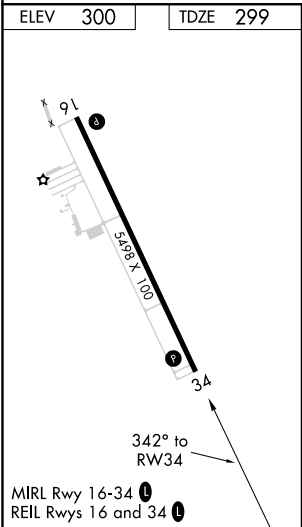
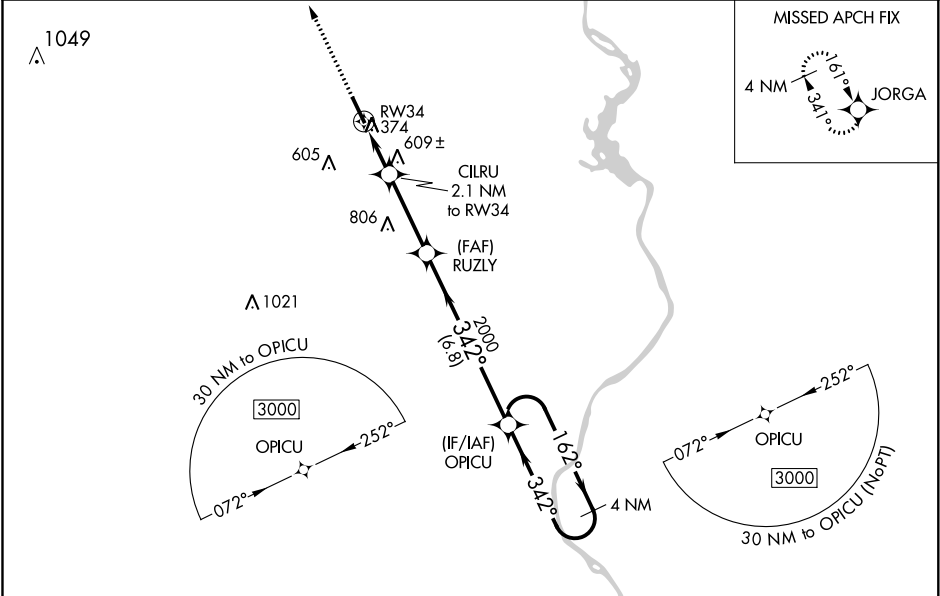
RNAV (GPS) RWY 34


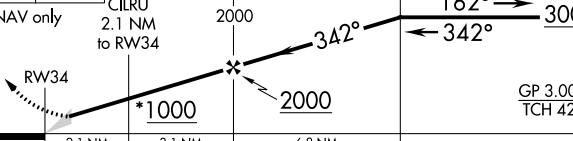
ANSON COUNTY-JEFF CLOUD FIELD (A/P)

**⚠** When VGSI inop, Circling Rwy 16 NA at night. Baro-VNAV NA when using Rockingham altimeter setting. For uncompensated Baro-VNAV systems, LNAV/VNAV NA below -15°C (5°F) or above 42°C (107°F). DME/DME RNP-0.3 NA. When local altimeter setting not received, use Rockingham altimeter setting: increase LPV DA to 598 and LPV all Cats visibility 1/8 mile; increase LNAV/VNAV DA to 1005 and LNAV/VNAV all Cats visibility 1/4 mile; increase all MDA 60 feet and LNAV Cats C/D and Circling Cat C visibility 1/8 mile.

MISSED APPROACH:  
Climb to 3000 direct JORGA and hold.

AWOS-3 <b>119.325</b>	CHARLOTTE APP CON <b>120.05 307.8</b>	UNICOM <b>122.8 (CTAF) 0</b>
--------------------------	--	---------------------------------



3000 ↑	JORGA 	VGSI and RNAV glidepath not coincident (VGSI Angle 3.00/TCH 45).		4 NM Holding Pattern
*LNAV only	CILRU 2.1 NM to RW34	RUZLY 2000	OPICU	3000
				
CATEGORY	A	B	C	D
LPV DA	549-7/8		250 (300-7/8)	
LNAV/DA VNAV	956-2 1/4		657 (700-2 1/4)	
LNAV MDA	860-1	561 (600-1)	860-1 5/8	561 (600-1 5/8)
CIRCLING	860-1	560 (600-1)	880-1 5/8 580 (600-1 5/8)	980-2 1/4 680 (700-2 1/4)