

LOC/DME I-HRJ  
**108.35**  
Chan 20(Y)

APP CRS  
**048°**

Rwy Idg  
TDZE **195**  
Apt Elev **202**

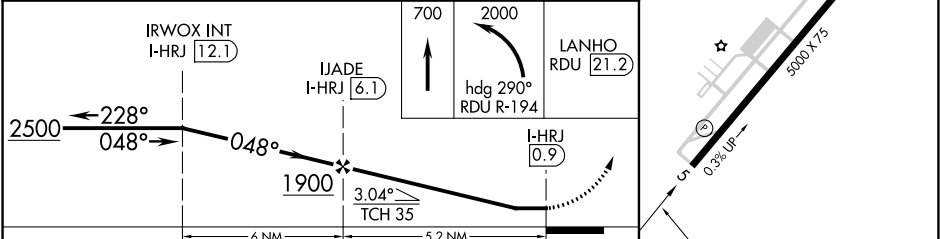
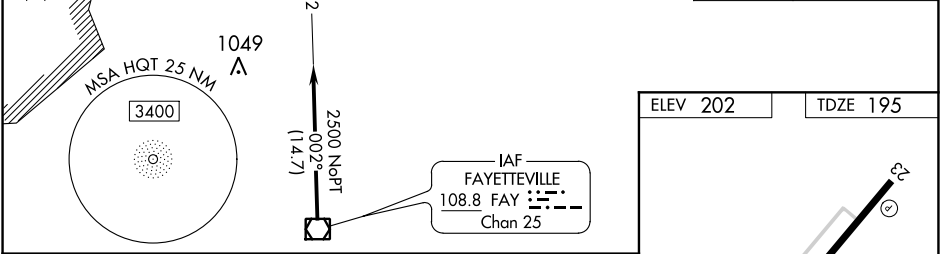
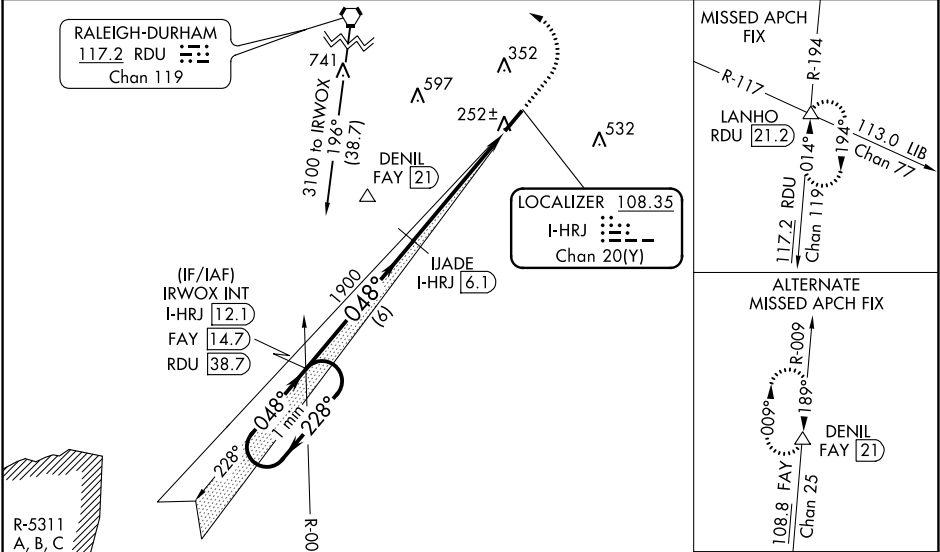
LOC RWY 5  
HARNETT RGNL JETPORT (HRJ)

DME required.

Rwy 5 helicopter visibility reduction below 1 SM NA. When local altimeter setting not received, use Smithfield altimeter setting and increase all MDA 60 feet.

MISSED APPROACH: Climb to 700 then climbing left turn to 2000 on heading 290° and RDU R-194 to LANHO INT/RDU 21.2 DME and hold.

AWOS-3 <b>119.025</b>	FAYETTEVILLE APP CON <b>125.175 285.575</b>	GCO <b>135.075</b>	UNICOM <b>122.7 (CTAF) 0</b>
--------------------------	--	-----------------------	---------------------------------



CATEGORY	A	B	C	D
S-5	520-1	325 (400-1)		NA
CIRCLING	600-1 398 (400-1)	660-1 458 (500-1)	720-1½ 518 (600-1½)	NA