

LOM VU 346	APP CRS 224°	Rwy Idg 5499 TDZE 584 Apt Elev 609	NDB RWY 22L STANLY COUNTY (VUJ)	
----------------------	------------------------	---	------------------------------------	--

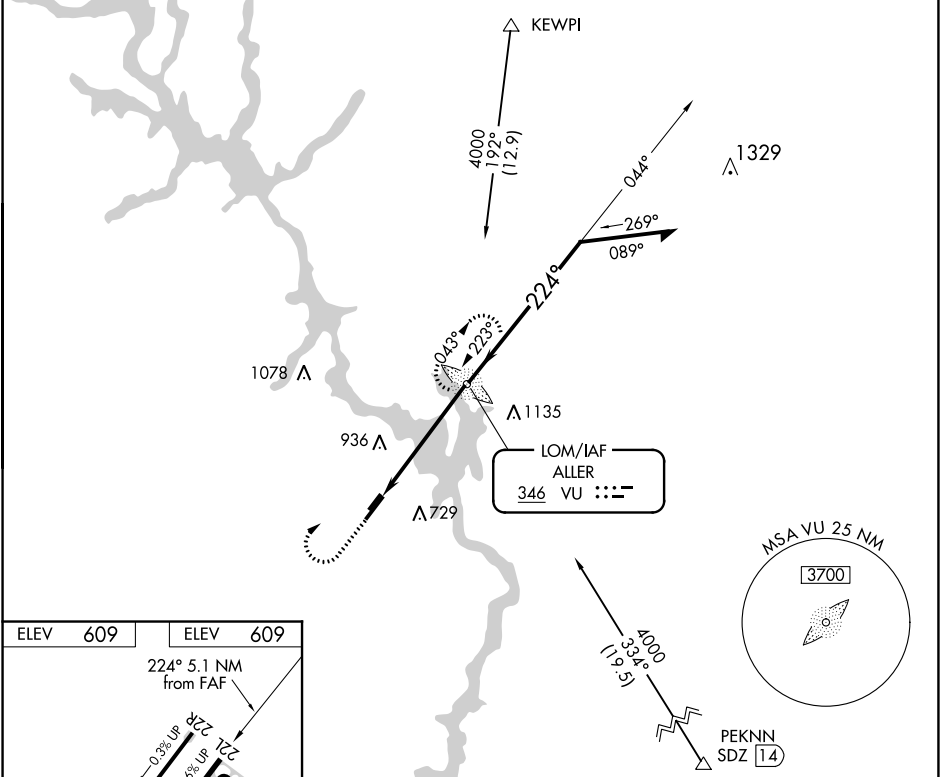
⚠

ASR/PAR

Circling to Rwy 4L/22R NA at night. When local altimeter setting not received, use Asheboro altimeter setting and increase all MDA 60 feet; increase S-22L Cats C and D, and Circling Cats C and D visibility ¼ mile.

MISSED APPROACH: Climb to 1500 then climbing right turn to 4000 direct ALLER LOM and hold, continue climb-in-hold to 4000.

AWOS-3 128.175	CHARLOTTE APP CON 128.325 307.8	STANLY COUNTY TOWER★ 126.275 (CTAF) 291.9	GND CON 121.75 254.375	CLNC DEL 121.75 254.375	UNICOM 123.0
--------------------------	---	---	----------------------------------	-----------------------------------	------------------------



ELEV 609

ELEV 609

224° 5.1 NM from FAF

22L

22R

TWR

3501 X 775

5499 X 100

AL

4R

REIL Rwys 4R and 22L

MIRL Rwys 4L-22R

HIRL Rwys 4R-22L

FAF to MAP 5.1 NM

Knots

60

90

120

150

180

Min:Sec

5:06

3:24

2:33

2:02

1:42

1500

↑

4000

↷

VU

VU LOM

044°

Remain within 10 NM

2600

224°

2400

3.27°

TCH 40

5.1 NM

VGSI and descent angles not coincident (VGSI Angle 3.00/TCH 40).

CATEGORY	A	B	C	D
S-22L	1240-1 656 (700-1)		1240-1¾ 656 (700-1¾)	1240-2 656 (700-2)
CIRCLING	1260-1 651 (700-1)		1260-1¾ 651 (700-1¾)	1260-2 651 (700-2)