

LOC RWY 28
ASHE COUNTY (GEV)

MISSED APPROACH: Climbing left turn to 7200 on heading 096° and BZM VOR/DME R-356 to HUBVA/BZM 30.8 DME and hold, continue climb-in-hold to 7200.

AWOS-3 120.675	ATLANTA CENTER 125.15 263.0	UNICOM 122.8 (CTAF) 0
--------------------------	---------------------------------------	---------------------------------

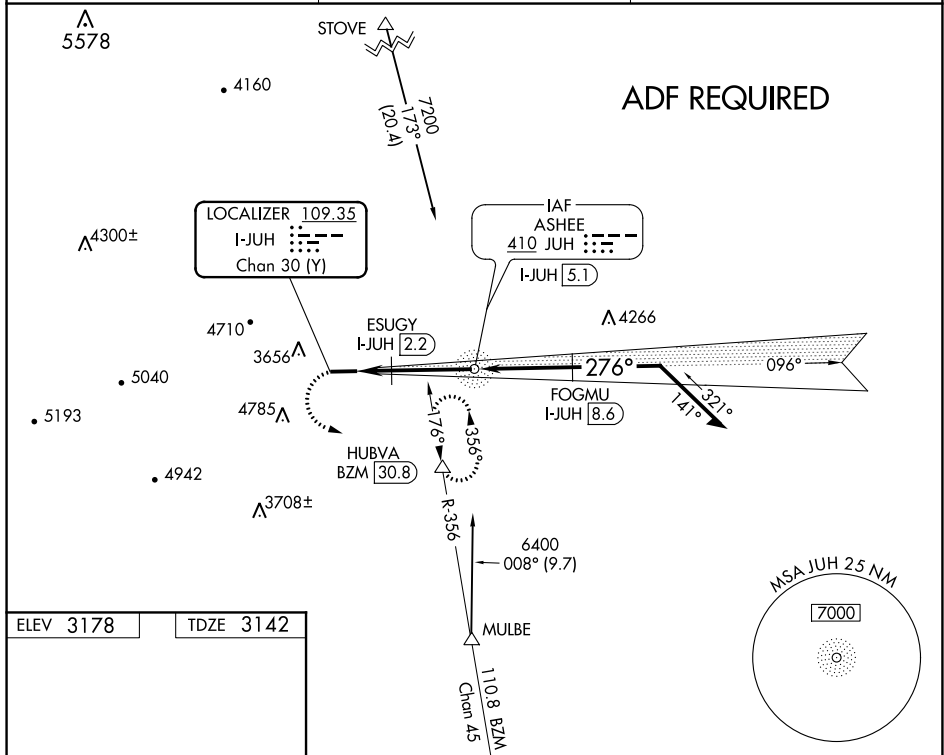


Diagram illustrating the Rwy 28 instrument approach procedure, showing the approach path, altitudes, distances, and various navigation aids (HUBVA, ESUGY, FOGMU, VGS).

Key data points from the diagram:

- Runway: 5002 X 75
- Gradient: 1.8% UP
- Heading: 276° 4.3 NM from FAF
- Altitudes: 7200, 6100, 5700, 4700, 3450
- Distances: 1.3, 1 NM, 2 NM, 3.5 NM
- Navigation Aids: HUBVA, ESUGY, FOGMU, VGS
- Angles: 096°, 276°, 276°, 3.45°, 096°
- Notes: Remain within 10 NM, VGS and descent angles not coincident (VGS Angle 3.00/TCH 48)

CATEGORY	A	B	C	D
S-28	3860-1½ 718 (700-1½)		3860-2 718 (700-2)	
C CIRCLING	4240-1½ 1062 (1100-1½)		NA	

REIL Rwy 28 **1**
MIRL Rwy 10-28 **1**

SE-2, 31 DEC 2020 to 28 JAN 2021

SE-2. 31 DEC 2020 to 28 JAN 2021