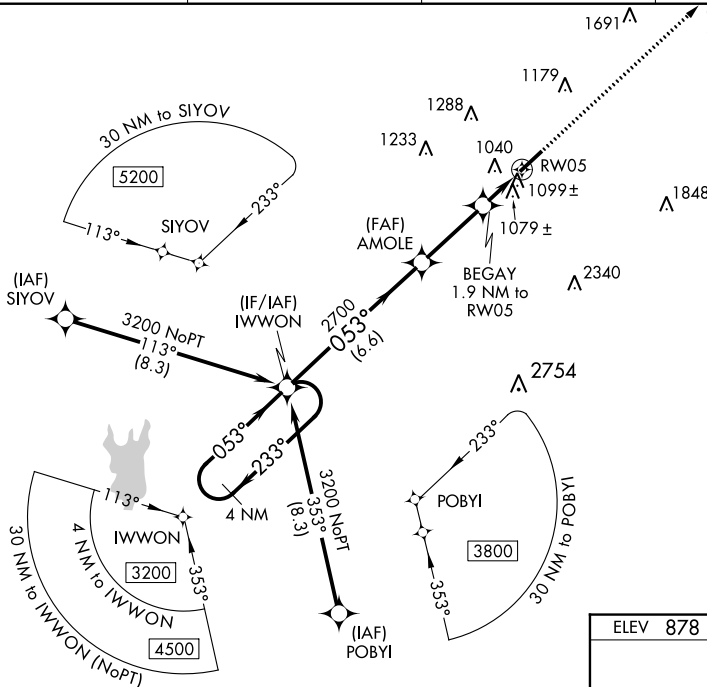



RNAV (GPS) RWY 5

LINCOLN-TOLSON COUNTY RGNL (IPJ)

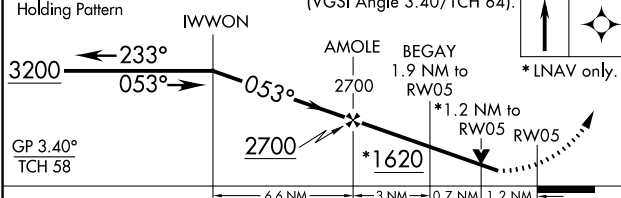
▼ When local altimeter setting not received, use Charlotte altimeter setting: increase LPV DA to 1395 feet, LNAV/VNAV DA to 1463 feet and visibility LNAV/VNAV $\frac{1}{4}$ SM; increase all MDAs 80 feet and visibility Cats C and D $\frac{1}{4}$ SM. Rwy 5 helicopter visibility reduction below $\frac{3}{4}$ SM NA. Baro-VNAV and VDP NA when using Charlotte altimeter setting.


▲ For uncompensated Baro-VNAV systems, LNAV/VNAV NA below -16°C or above 47°C .

UNICOM
123.05 (CTAF) 

VGSI and RNAV glidepath not coincident
(VGSI Angle 3.40/TCH 64).

3000	JIVOM
------	-------



CATEGORY		A		B		C		D	
LPV	DA	1332-1 $\frac{3}{8}$		454 (500-1 $\frac{3}{8}$)				NA	
LNAV/ VNAV	DA	1400-1 $\frac{1}{2}$		522 (600-1 $\frac{1}{2}$)				NA	
LNAV MDA		1360-1		482 (500-1)		1360-1 $\frac{3}{8}$		482 (500-1 $\frac{3}{8}$)	
	CIRCLING	1400-1		1440-1		1640-2 $\frac{1}{4}$		1640-2 $\frac{1}{2}$	
		522 (600-1)		562 (600-1)		762 (800-2 $\frac{1}{4}$)		762 (800-2 $\frac{1}{2}$)	

