

WAAS
CH **50510**
W24A

APP CRS
240°

Rwy Idg
TDZE
Apt Elev
6005
609
609

RNAV (GPS) RWY 24

RALEIGH RGNL AT PERSON COUNTY (TDF')

RNP APCH.

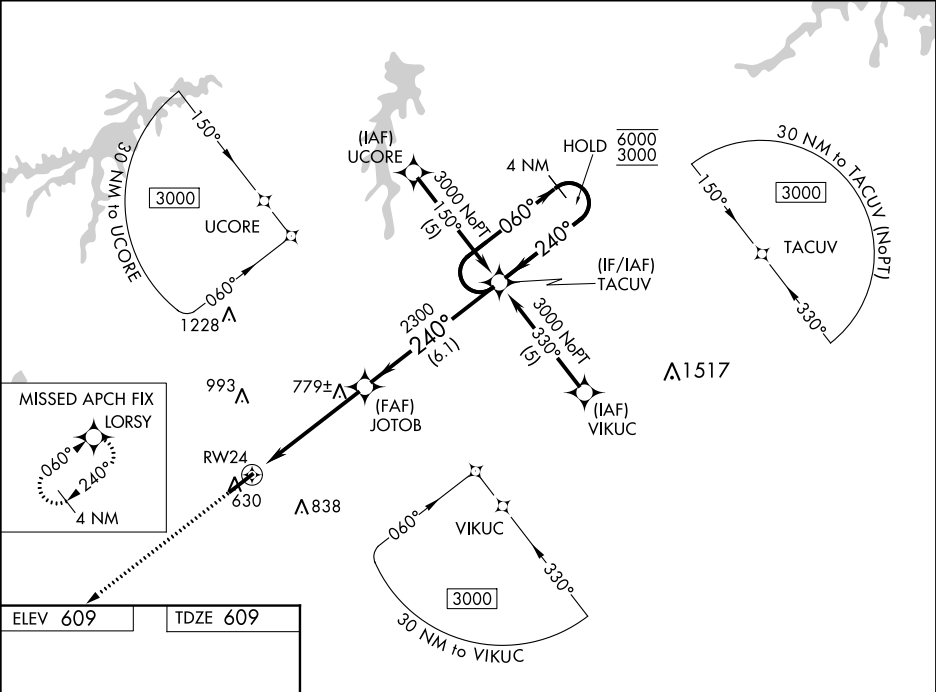
▼ Rwy 24 helicopter visibility reduction below ¾ SM NA. For uncompensated

▲ Baro-VNAV systems, LNAV/VNAV NA below -16°C or above 54°C.

MISSED APPROACH:

Climb to 3000 direct LORSY and hold.

AWOS-3 126.725	RALEIGH APP CON 132.35 256.9	GCO 119.7	UNICOM 122.7 (CTAF) 0
--------------------------	--	---------------------	--



ELEV **609**

TDZE **609**

3000

LORSY

VGSI and RNAV glidepath not coincident (VGSI Angle 3.00°/TCH 44).

4 NM Holding Pattern

*LNAV only

RW24

JOTOB

TACUV

GP 3.00° TCH 40

CATEGORY	A	B	C	D
LPV DA	920-1 311 (400-1)			
LNAV/VNAV DA	997-1½ 388 (400-1½)			
LNAV MDA	1040-1 431 (500-1)	1040-1¼ 431 (500-1¼)	1040-1½ 431 (500-1½)	
CIRCLING	1080-1 471 (500-1)	1080-1½ 471 (500-1½)	1160-2 551 (600-2)	