

LOC/DME I-UKF 111.55 Chan 52 (Y)	APP CRS 007°	Rwy Idg 6200 TDZE 1276 Apt Elev 1303
---	------------------------	---

ILS Y or LOC Y RWY 1
WILKES COUNTY (UKF)

T VDP NA when using Hickory altimeter setting. When local altimeter setting not received, use Hickory altimeter setting and increase S-ILS DA to 1569 feet and all MDAs 100 feet, and increase S-LOC Cats C/D visibility $\frac{3}{4}$ SM and Circling Cat C visibility $\frac{1}{2}$ SM. For inop ALS when using Hickory altimeter setting, increase S-ILS all Cats visibility and S-LOC Cat C/D visibility $\frac{3}{4}$ SM.

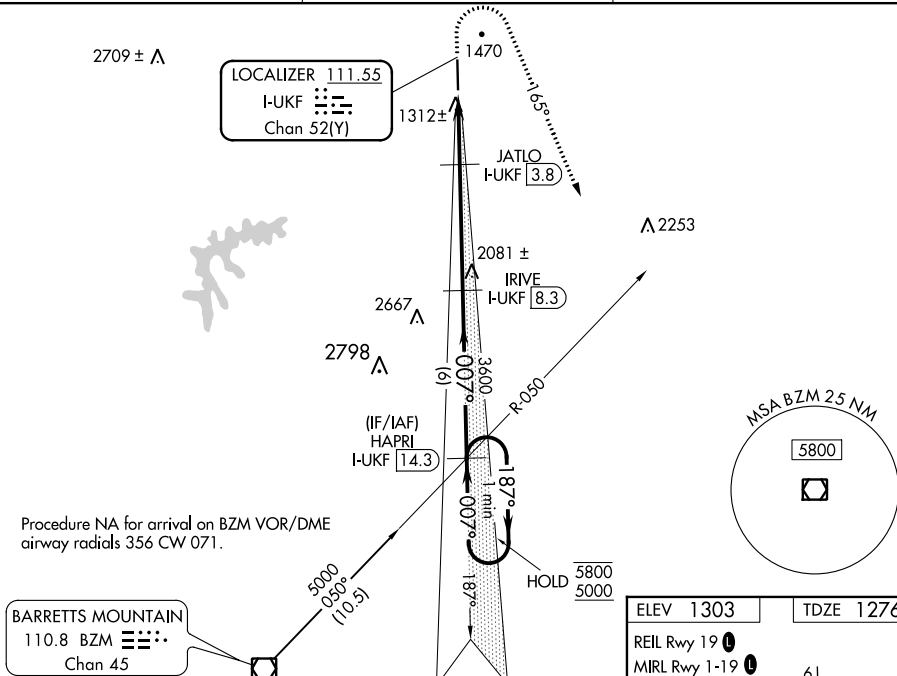
MALSR



MISSED APPROACH: Climb to 1740 then climbing right turn to 5000 heading 165° and BZM VOR/DME R-050 direct HAPRI/I-UKF 14.3 DME and hold, continue climb-in-hold to 5000.

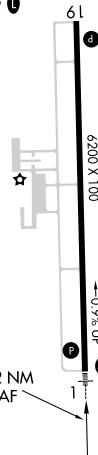
AWOS-3
126.625

ATLANTA CENTER
125.15 263.0

UNICOM
122.7 (CTAF) **L**

ELEV 1303		TDZE 1276
-----------	--	-----------

REIL Rwy 19 **L**
MIRL Rwy 1-19 **L**



One Minute Holding Pattern

HAPRI 14.3
I-UKF 14.3

IRIVE 8.3
I-UKF 8.3

JATLO 3.8
I-UKF 3.8

I-UKF 2.1

I-UKF 1.1

1740
↑

5000
hdg 165°

BZM R-050

HAPRI 14.3
I-UKF 14.3

* LOC only.

5800 ← 187°
5000 007° → 007°

GS 3.00°
TCH 59

3600

* 2160

6 NM

4.5 NM

1.7 NM

1 NM

CATEGORY	A	B	C	D
S-ILS 1	1476-½ 200 (200-½)			
S-LOC 1	1640-½ 364 (400-½)		1640-⅝ 364 (400-⅝)	
CIRCLING	1800-1 497 (500-1)	1880-1 577 (600-1)	1880-1½ 577 (600-1½)	2240-3 937 (1000-3)