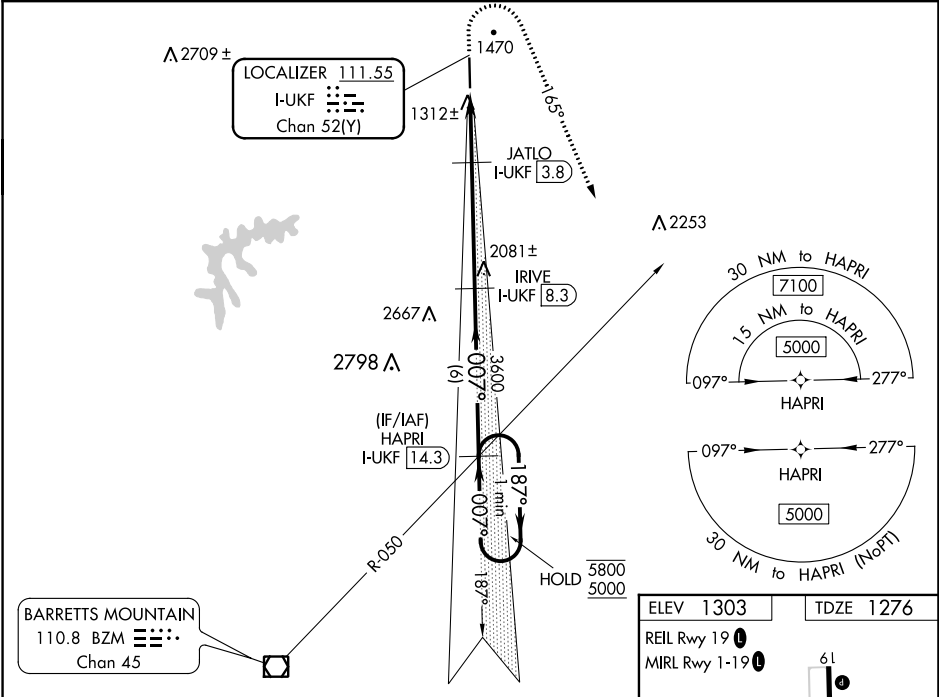


LOC/DME I-UKF 111.55 Chan 52(Y)	APP CRS 007°	Rwy Idg TDZE 1276 Apt Elev 1303
---	------------------------	---

ILS Z or LOC Z RWY 1
WILKES COUNTY (UKF')

DME required. RNAV 1-GPS required.	MALSR 	MISSED APPROACH: Climb to 1740 then climbing right turn to 5000 heading 165° and BZM VOR/DME R-050 direct HAPRI/ I-UKF 14.3 DME and hold, continue climb-in-hold to 5000.
------------------------------------	-----------	---

AWOS-3 126.625	ATLANTA CENTER 125.15 263.0	UNICOM 122.7 (CTAF)
--------------------------	---------------------------------------	-------------------------------



CATEGORY	One Minute Holding Pattern HAPRI I-UKF 14.3			
	A	B	C	D
	S-ILS 1	1476-1/2	200 (200-1/2)	
	S-LOC 1	1640-1/2	364 (400-1/2)	1640-5/8 364 (400-5/8)
CIRCLING	1800-1	1880-1	1880-1 1/2	2240-3
	497 (500-1)	577 (600-1)	577 (600-1 1/2)	937 (1000-3)

