

VOR/DME FAY	APP CRS	Rwy Idg	5006
108.8	152°	TDZE	132
Chan 25		Apt Elev	132

VOR/DME RWY 15

CURTIS L BROWN JR FIELD (EYF)

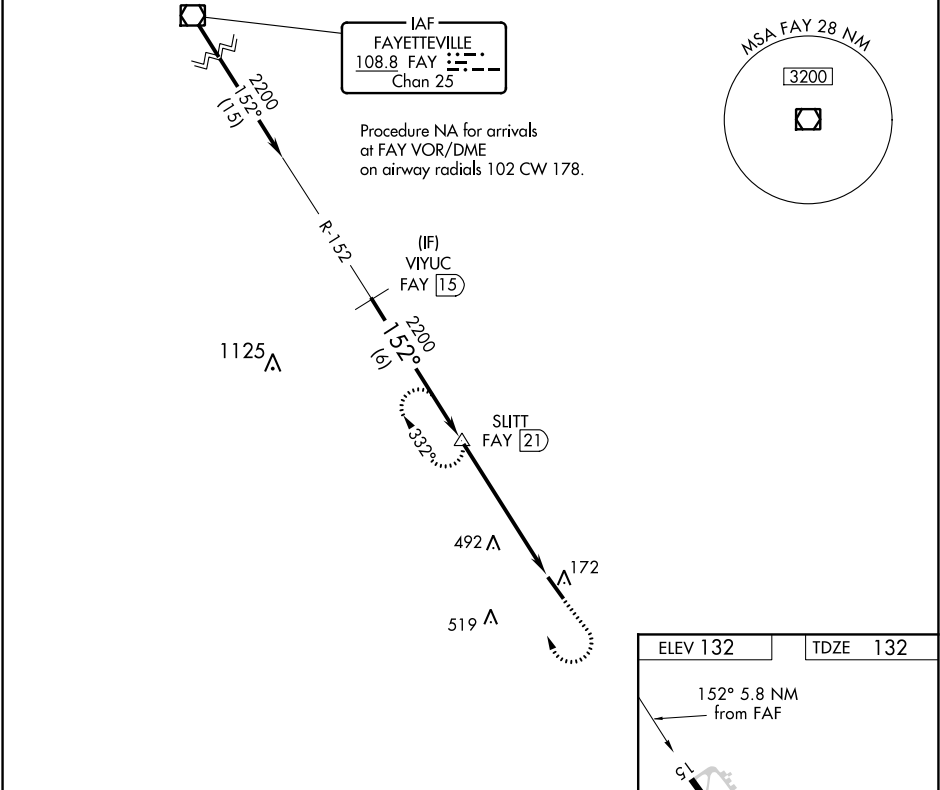
▼

▲

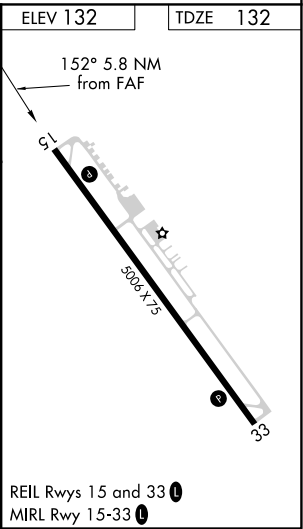
Visibility reduction by helicopters NA. When local altimeter setting not received, use Fayetteville altimeter setting and increase all MDA 80 feet and increase S-15 visibility Cats C and D ¼ mile and increase Circling visibility Cat C ¼ mile and Cat D ½ mile.

MISSED APPROACH: Climb to 1000 then climbing right turn to 2200 on FAY R-152 to SLITT/21 DME and hold.

AWOS-3P	FAYETTEVILLE APP CON	UNICOM
119.475	133.0 290.25	122.8 (CTAF) 0



VGSI and RNAV glidepath not coincident (VGSI Angle 3.00/TCH 32).				
<div><div>VIYUC FAY 15</div><div>2200</div><div>Procedure Turn NA</div></div> <div><div>SLITT FAY 21</div><div>2200</div><div>3.28° TCH 43</div></div> <div><div>FAY 26.8</div></div>				
<div>6 NM</div> <div>5.8 NM</div>				
CATEGORY	A	B	C	D
S-15	760-1 628 (700-1)	760-1¼ 628 (700-1¼)	760-1¾ 628 (700-1¾)	760-2 628 (700-2)
CIRCLING	760-1 628 (700-1)	760-1¼ 628 (700-1¼)	760-1¾ 628 (700-1¾)	800-2 668 (700-2)



SE-2, 31 DEC 2020 to 28 JAN 2021

SE-2, 31 DEC 2020 to 28 JAN 2021