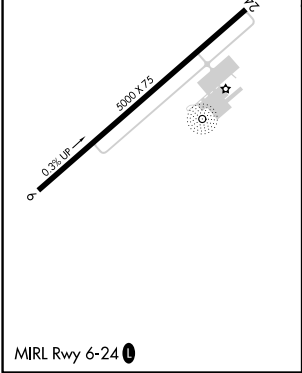
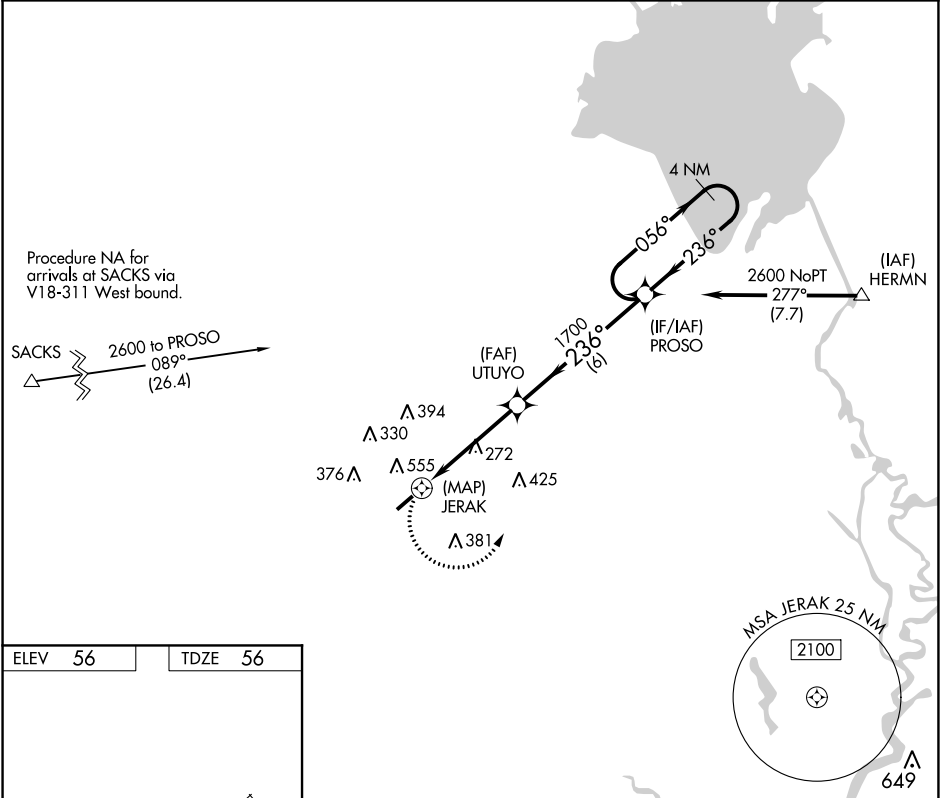


APP CRS	Rwy Idg	5000
236°	TDZE	56
	Apt Elev	56

RNAV (GPS) RWY 24
SUMMERVILLE (DYB)

RNP APCH.	Straight-in/Circling Rwy 24 NA at night. Rwy 24 helicopter visibility reduction below 1 SM NA.	MISSED APPROACH: Climbing left turn to 2600 direct PROSO and hold.
AWOS-3 119.575	CHARLESTON APP CON 120.7 306.925	UNICOM 123.0 (CTAF)



2600	PROSO	VGSI and descent angles not coincident.		4 NM
		PROSO		Holding Pattern
UTUYO		236°	056°	2600
JERAK		1700	236°	
TCH 30		3.04°		
0.5		4.5 NM	6 NM	
CATEGORY	A	B	C	D
LNAV MDA	540-1	484 (500-1)	540-1 3/8 484 (500-1 3/8)	NA
CIRCLING	860-1 804 (900-1)	860-1 1/4 804 (900-1 1/4)	860-2 1/4 804 (900-2 1/4)	NA