

LOC/DME I-JQF
111.95
Chan **56(Y)**

APP CRS
196°

Rwy Idg **6350**
TDZE **705**
Apt Elev **705**

ILS or LOC RWY 20
CONCORD-PADGETT RGNL (JQF)

DME or RADAR required for LOC only.

▼

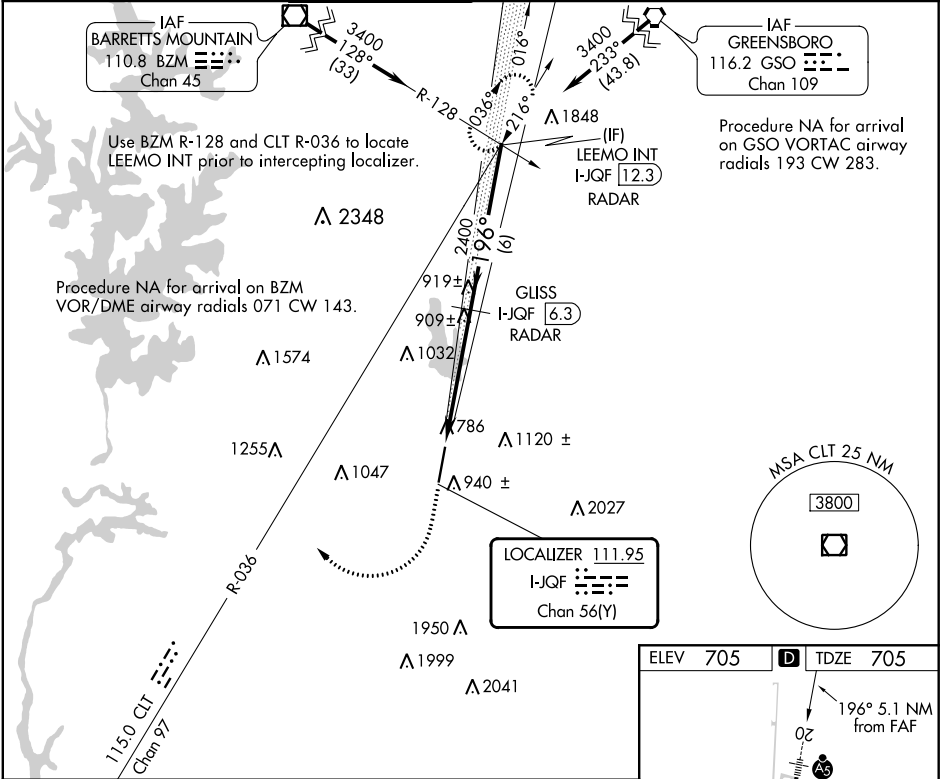
NA

For inop ALS, increase S-LOC 20 Cat D visibility to 1 3/8 SM.

MALSRR

MISSED APPROACH: Climb to 1200 then climbing right turn to 3400 on heading 020° and CLT VOR/DME R-036 to LEEMO INT/I-JQF 12.3 DME/RADAR and hold.

ATIS★ 133.675	CHARLOTTE APP CON 128.32 307.8	CONCORD TOWER★ 134.65 (CTAF) 0	GND CON 121.85	CLNC DEL 118.55	CLNC DEL 127.25 (when twr closed)	UNICOM 122.95
-------------------------	--	--	--------------------------	---------------------------	--	-------------------------



1200	3400	CLT R-036	LEEMO INT	GLISS I-JQF [6.3] RADAR	LEEMO INT I-JQF [12.3] RADAR
* LOC only.					
* I-JQF [2.5]					
I-JQF [1.2]					
1.3 3.8 6 NM					
CATEGORY	A	B	C	D	
S-ILS 20	905-1/2 200 (200-1/2)				
S-LOC 20	1160-1/2 455 (500-1/2)	1160-7/8 455 (500-7/8)	1160-1 455 (500-1)		
CIRCLING	1300-1 595 (600-1)	1480-2 775 (800-2 1/4)	1480-2 775 (800-2 1/2)		

