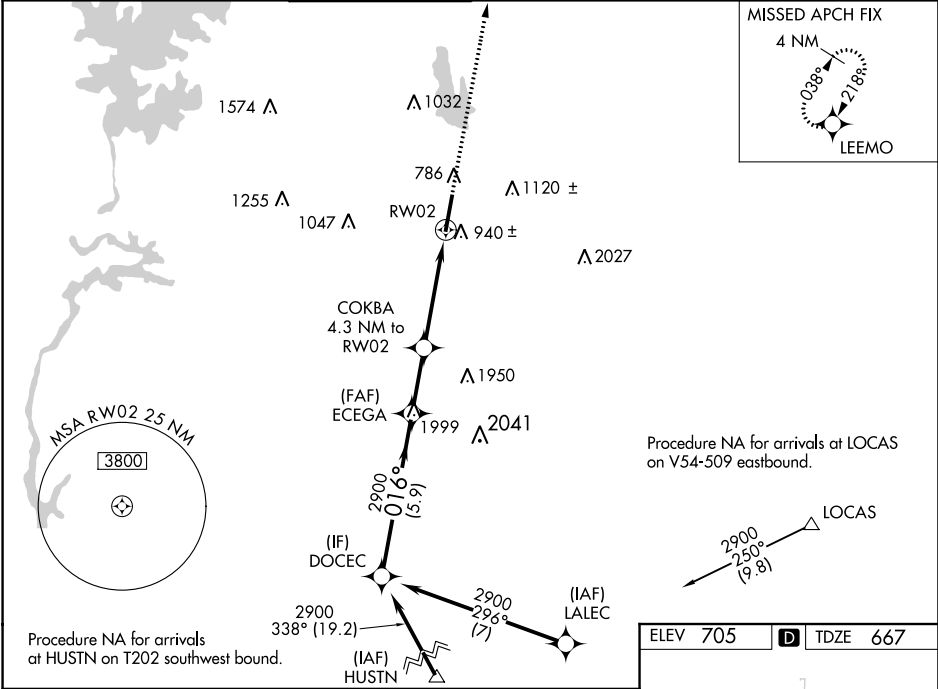


WAAS CH 93903 W02A	APP CRS 016°	Rwy Idg TDZE Apt Elev	7400 667 705
--	------------------------	-----------------------------	---

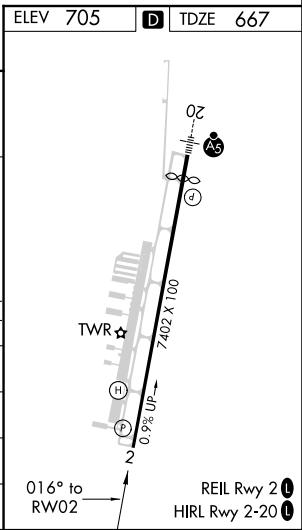
RNAV (GPS) RWY 2
CONCORD-PADGETT RGNL (JQF)

RNP APCH.				MISSED APPROACH: Climb to 4000 direct LEEMO and hold, continue climb-in-hold to 4000.		
Rwy 2 helicopter visibility reduction below ¾ SM NA. For uncompensated Baro-VNAV systems, LNAV/VNAV NA below -16°C or above 45°C.						

ATIS★ 133.675	CHARLOTTE APP CON 128.32 307.8	CONCORD TOWER★ 134.65 (CTAF) 0	GND CON 121.85	CLNC DEL 118.55	CLNC DEL 127.25 (when twr closed)	UNICOM 122.95
-------------------------	--	--	--------------------------	---------------------------	--	-------------------------



VGSI and RNAV glidepath not coincident (VGSI Angle 3.50/TCH 69).				4000	LEEMO
DOCEC				2900	ECEGA
GP 3.10° TCH 60				2900	COKBA
2900				016°	2900
5.9 NM				2.4 NM	2.9 NM
*2100				*1.4 NM to RW02	RW02
CATEGORY	A	B	C	D	
LPV DA	986-1½		319 (300-1½)		
LNAV/VNAV DA	1220-1½		553 (600-1½)		
LNAV MDA	1240-1	573 (600-1)	1240-1½	573 (600-1½)	
CIRCLING	1300-1	595 (600-1)	1480-2¼ 775 (800-2¼)	1480-2½ 775 (800-2½)	



SE-2, 31 DEC 2020 to 28 JAN 2021

SE-2, 31 DEC 2020 to 28 JAN 2021