

WAAS  
CH **72822**  
**W03A**

APP CRS  
**029°**

Rwy Idg  
TDZE **6501**  
246  
Apt Elev **246**

RNAV (GPS) RWY 3

RALEIGH EXECUTIVE JETPORT AT SANFORD-LEE COUNTY (T'IA)

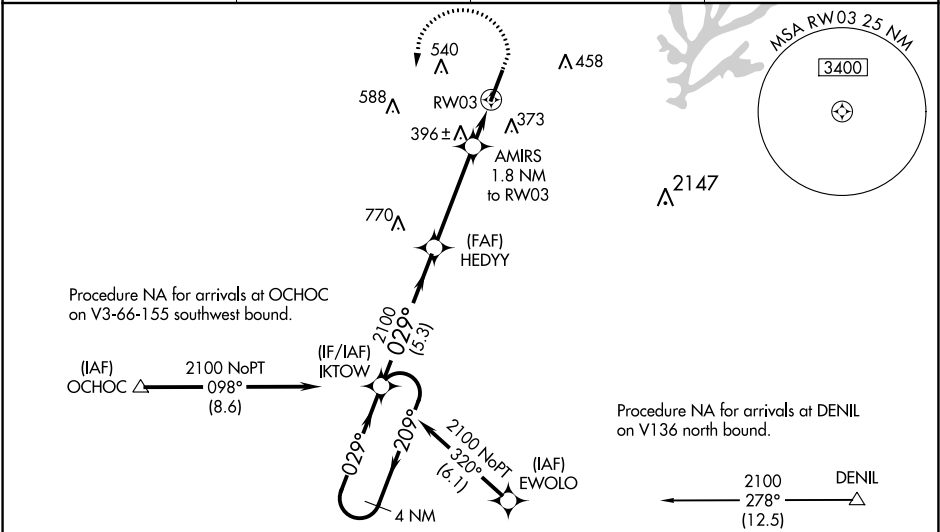
Baro-VNAV NA when using Raleigh/Durham altimeter setting. For uncompensated Baro-VNAV systems, LNAV/VNAV NA below -15°C (5°F) or above 54°C (130°F). DME/DME RNP-0.3 NA.

When local altimeter setting not received, use Raleigh/Durham altimeter setting and increase all DA 81 feet and all MDA 100 feet. Increase LNAV/VNAV all Cats visibility to 1½ mile, LNAV Cats C and D visibility to 1 mile, and Circling Cat C visibility to 2 mile and Cat D visibility to 2¾ mile. For inop MALSR, increase LNAV/VNAV all Cats visibility to 1¼ mile and LNAV Cats C and D visibility to 1½ mile. For inop MALSR when using Raleigh/Durham altimeter setting, increase LPV all Cats visibility to ¾ mile and LNAV Cats C and D visibility to 1½ mile. VDP NA when using Raleigh/Durham altimeter setting.

MALSR

MISSED APPROACH:  
Climb to 1300 then climbing left turn to 2100 direct IKTOW and hold.

AWOS-3 <b>120.625</b>	RALEIGH APP CON <b>125.3 353.675</b>	UNICOM <b>123.075 (CTAF) 0</b>	GCO <b>135.075</b>
--------------------------	---	-----------------------------------	-----------------------



		ELEV	246	TDZE	246
4 NM Holding Pattern		1300	2100	IKTOW	
IKTOW		*LNAV only.			
HEDYY		2100	2100	2100	2100
AMIRS		1.8 NM to RW03	1.2 NM to RW03	RW03	
GP 3.00° TCH 45		5.3 NM	3.9 NM	0.6 NM	1.2 NM
CATEGORY		A	B	C	D
LPV DA		446-½		200 (200-½)	
LNAV/VNAV DA		634-⅞		388 (400-⅞)	
LNAV MDA		660-½		414 (500-½)	
CIRCLING		760-1 514 (600-1)	820-1 574 (600-1)	840-1½ 594 (600-1½)	960-2¼ 714 (800-2¼)