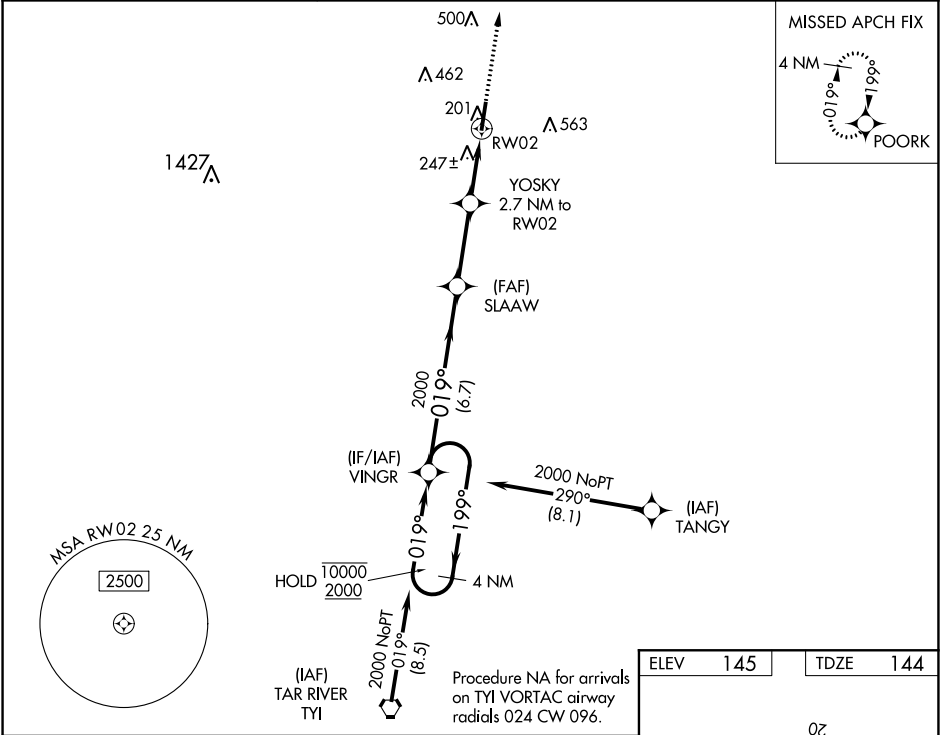


WAAS CH <b>78025</b> <b>W02A</b>	APP CRS <b>019°</b>	Rwy Idg <b>5500</b> TDZE <b>144</b> Apt Elev <b>145</b>
--	------------------------	---

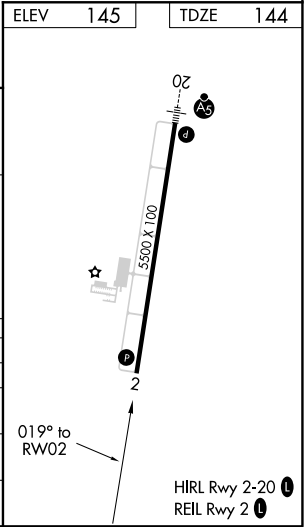
RNAV (GPS) RWY 2  
HALIFAX-NORTHAMPTON RGNL (IXA)

RNP APCH.	Rwy 2 helicopter visibility reduction below ¾ SM NA. For uncompensated Baro-VNAV systems, LNAV/VNAV NA below -15°C or above 54°C. Circling NA east of Rwy 2-20.	MISSED APPROACH: Climb to 2000 direct POORK and hold.
-----------	---	---

AWOS-3PT <b>119.975</b>	WASHINGTON CENTER <b>132.025 290.425</b>	UNICOM <b>123.075 (CTAF) 0</b>
----------------------------	---	-----------------------------------



4 NM Holding Pattern		VGSi and RNAV glidepath not coincident (VGSi Angle 3.00/TCH 25).		2000 POORK
10000 ← 199°		019° →		*LNAV only.
2000		2000		
GP 3.00°		*1040		
TCH 40		*1.1 NM to RWY 02		
6.7 NM		3 NM		
1.6 NM		1.1 NM		
CATEGORY	A	B	C	D
LPV DA		394-7/8	250 (300-7/8)	
LNAV/VNAV DA		433-1	289 (300-1)	
LNAV MDA		500-1	356 (400-1)	
CIRCLING	560-1 415 (500-1)	600-1 455 (500-1)	780-1¾ 635 (700-1¾)	860-2¼ 715 (800-2¼)



SE-2, 31 DEC 2020 to 28 JAN 2021

SE-2, 31 DEC 2020 to 28 JAN 2021