

WAAS

CH **72725**

W20A

APP CRS

199°

Rwy Idg

5500

TDZE

144

Apt Elev

145

RNAV (GPS) RWY 20

HALIFAX-NORTHAMPTON RGNL (IXA)

RNP APCH.

V

A

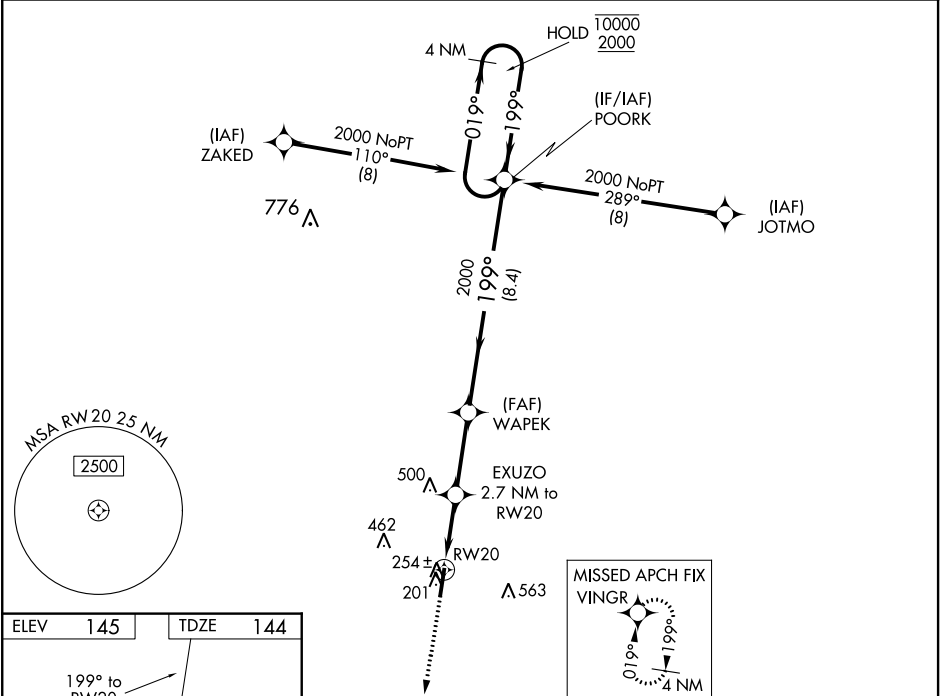
For uncompensated Baro-VNAV systems, LNAV/VNAV NA below -1.5°C or above 54°C. Circling NA east of Rwy 2-20. For inop ALS increase LNAV/VNAV visibility all Cats to ¾ SM and LNAV Cats C/D to 1 SM.

MALS

A5

MISSED APPROACH:
Climb to 2000 direct VINGR and hold.

AWOS-3PT 119.975	WASHINGTON CENTER 132.025 290.425	UNICOM 123.075 (CTAF) 0
----------------------------	---	-----------------------------------



ELEV **145**

TDZE **144**

199° to RW20

02

A5

HIRL Rwy 2-20 0

REIL Rwy 2 0

2000	VINGR	VGSI and RNAV glidepath not coincident. (VGSI Angle 3.00/TCH 24)		4 NM	POORK	Holding Pattern
*LNAV only.	EXUZO 2.7 NM to RW20	WAPEK 2000	199°	019°	10000	2000
	*1.1 NM to RW20		2000	199°		
	RW20		*1040			
	1.1	1.6	3 NM	8.4 NM		
CATEGORY	A	B	C	D		
LPV	DA	344-½	200 (200-½)			
LNAV/VNAV	DA	420-½	276 (300-½)			
LNAV	MDA	520-½	376 (400-½)	520-⅝	376 (400-⅝)	
CIRCLING	560-1 415 (500-1)	600-1 455 (500-1)	780-1¾ 635 (700-1¾)	860-2¼ 715 (800-2¼)		