

APP CRS
001°

Rwy Idg
TDZE
Apt Elev

3000
12
12

RNAV (GPS) RWY 3
FIRST FLIGHT(F'F'A)

▼

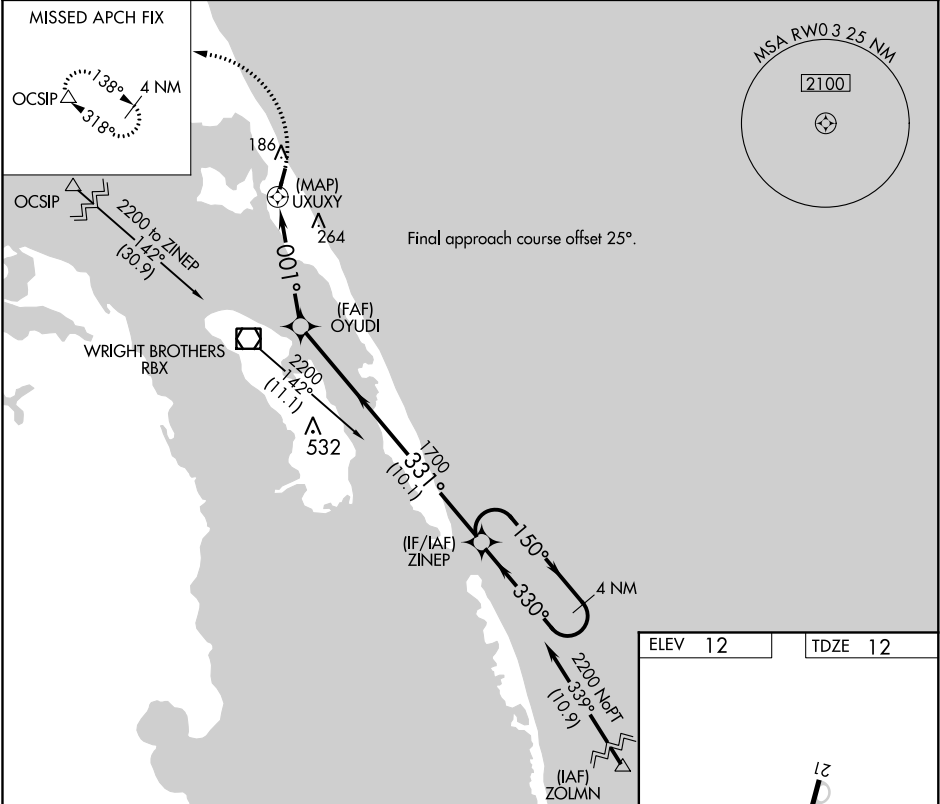
DME/DME RNP-0.3 NA. Procedure NA at night.
Rwy 3 helicopter visibility reduction below 1 SM NA.

MISSED APPROACH: Climbing left turn to
3000 direct OCSIP and hold.

AWOS-3
118.075

CHERRY POINT APP CON
124.725 350.35

CTAF
122.9



4 NM Holding Pattern

3000 OCSIP

CATEGORY	A	B	C	D
LNAV MDA	480-1	468 (500-1)	NA	
CIRCLING	520-1 508 (600-1)	540-1 528 (600-1)	NA	

KILL DEVIL HILLS, NORTH CAROLINA

Orig 22JUN17

36°01'N-75°40'W

FIRST FLIGHT(F'F'A)

RNAV (GPS) RWY 3