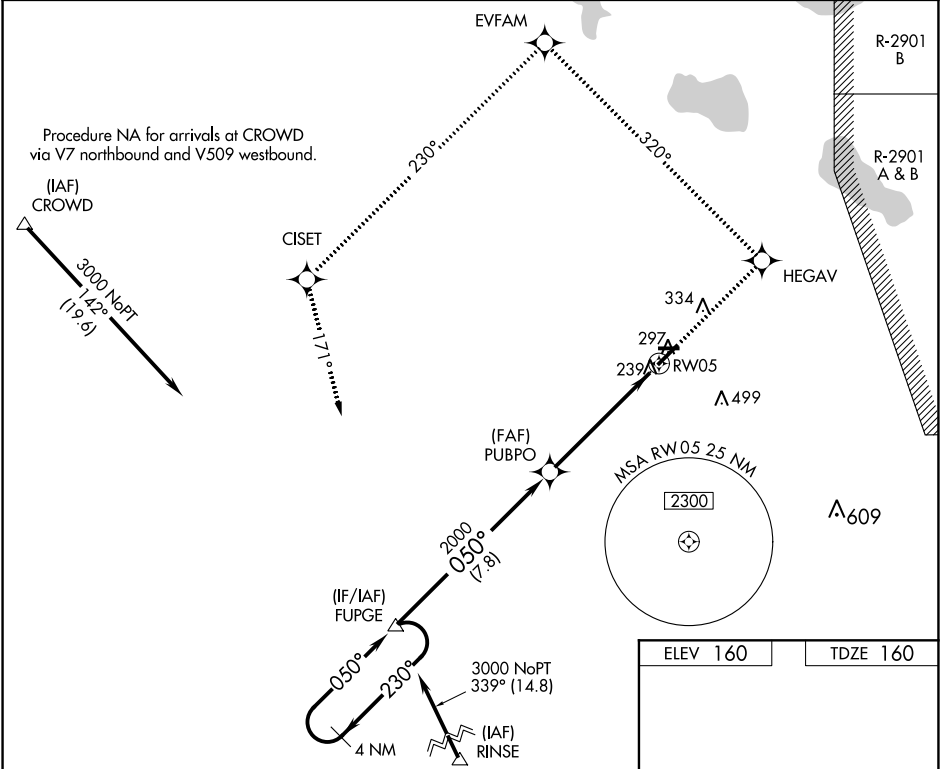


WAAS CH <b>86716</b> <b>W05A</b>	APP CRS <b>050°</b>	Rwy Idg TDZE <b>160</b> Apt Elev <b>160</b>	<b>5374</b>
--	------------------------	---	-------------

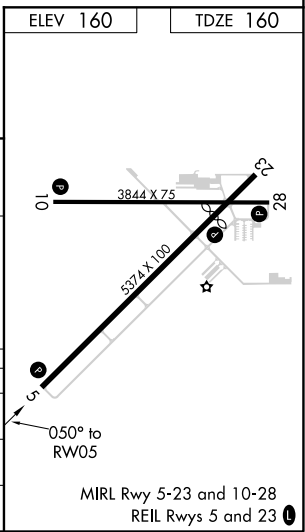
**RNAV (GPS) RWY 5**  
AVON PARK EXECUTIVE (AVO)

<b>NA</b> DME/DME RNP-0.3 NA. Rwy 5, 10, 23, 28, helicopter visibility reduction below 1 SM NA. When local altimeter setting not received, use Orlando Intl altimeter setting; increase DA to 578 feet and visibility Cat A/B ½ mile. Increase all MDA 140 feet. Procedure NA at night.	<b>MISSED APPROACH:</b> Climb to 3000 direct HEGAV and via track 320° to EVFAM and left turn via track 230° to Ciset and via track 171° to FUPGE and hold.
--	--

<b>AWOS-3</b> <b>118.725</b>	<b>MIAMI CENTER ★</b> <b>134.55 257.7</b>	<b>UNICOM</b> <b>122.8 (CTAF) 0</b>
---------------------------------	--	--



4 NM Holding Pattern		3000 ↑	HEGAV ✦	tr 320°	EVFAM ✦	tr 230° ↷	CISET ✦	tr 171°	FUPGE △
VGSI and RNAV glidepath not coincident (VGSI Angle 3.00/TCH 39). GP 3.00° TCH 60									
7.8 NM 5.5 NM									
CATEGORY	A	B	C	D					
LPV DA	450-1	290 (300-1)	NA						
LNAV MDA	540-1	380 (400-1)	NA						
CIRCLING	680-1 520 (600-1)	840-1 680 (700-1)	NA						



SE-3, 31 DEC 2020 to 28 JAN 2021

SE-3, 31 DEC 2020 to 28 JAN 2021