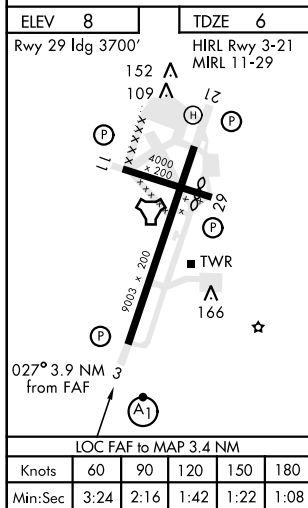
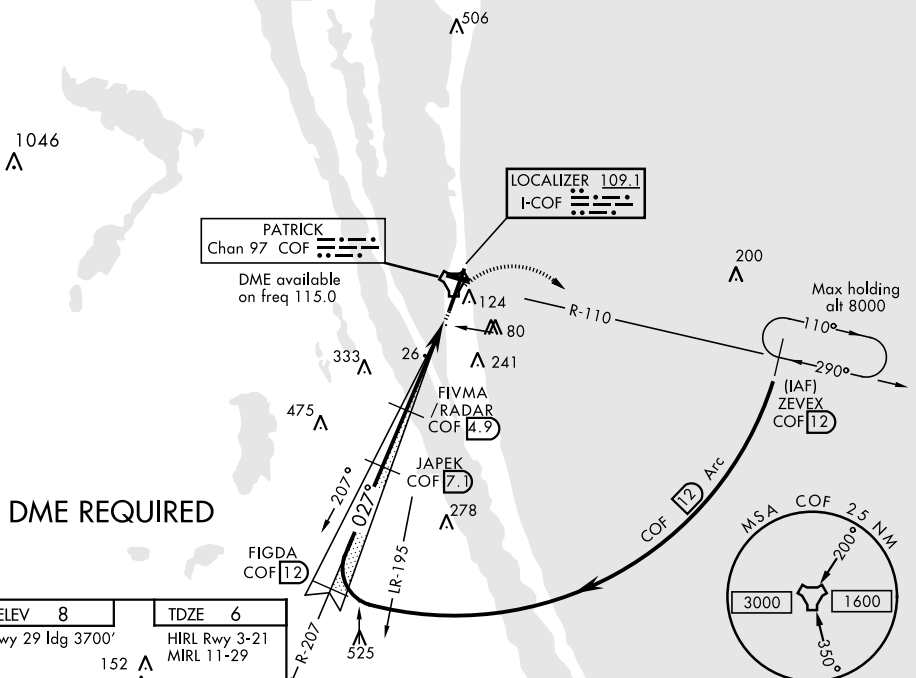


COCOA BEACH, FLORIDA

## ILS or LOC/DME RWY 3

LOC I-COF <b>109.1</b>		APCH CRS <b>027°</b>	Rwy Idg <b>9003</b> TDZE <b>6</b> Arpt Elev <b>8</b>	AL-38 [USAF]	PATRICK AFB (KCOF)	
<div>▼ * When ALS inop increase RVR to 40 and vis to ¾ mile. ** When ALS inop, increase CAT AB RVR to 55 and vis to 1 mile, CAT CD vis to 1 ¼ miles.</div>				ALSF-1 <div>A1</div>	MISSED APPROACH: Climb to 600, then turn right to intercept the COF R-110 direct ZEVEX, maintain 3000 and hold.	
ATIS ★ <b>119.175 273.5</b>		ORLANDO APP CON <b>132.65 281.425</b>		PATRICK TOWER ★ <b>133.75 269.375</b>	GND CON <b>124.35 335.8</b>	CLNC DEL <b>118.4 289.4</b>

\*\*\* Circling not authorized W of Rwy 3-21. When Rwy 29 VGSI inop, circling to Rwy 29 NA at night. USAF only: When Rwy 29 VGSI inop, circling to Rwy 29 at night authorized with MAJCOM A3 approval.



EMERG SAFE ALT 100 NM 3000			
ZEVEX R-110 12	FIGDA Intep Lcwr 12	JAPEK 7.1	FIVMA 4.9
3000	3000	2000	1300
Arc 12	GS 3.00° TCH 52	1300	1300
CATEGORY A B C D S-ILS 3 * 205/24 200 (200-½) S-LOC 3 ** 440/24 435 (500-½) 440/40 435 (500-¾) CIRCLING *** 480-1 472 (500-1) 500-1 492 (500-1) 500-1½ 492 (500-1½) 560-2 552 (600-2)			

COCOA BEACH, FLORIDA

28°14'N-80°37'W

PATRICK AFB (KCOF)

Amdt 1 31MAR16

## ILS or LOC/DME RWY 3