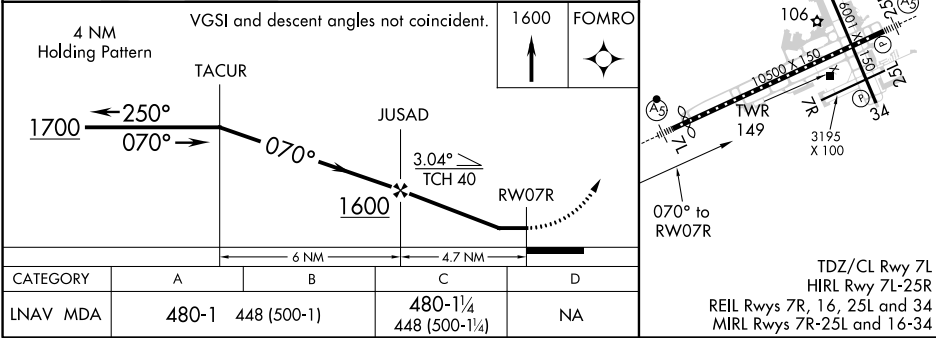
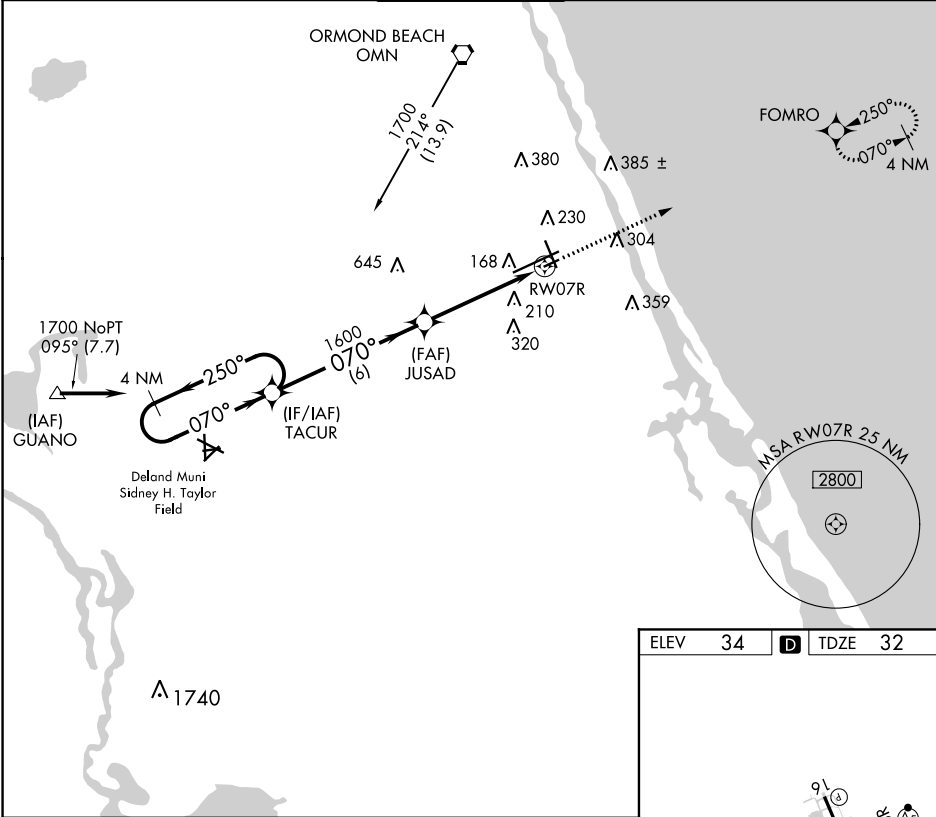


APP CRS	Rwy Idg	3195
070°	TDZE	32
	Apt Elev	34

RNAV (GPS) RWY 7R  
DAYTONA BEACH INTL (DAB)

RNP APCH.	MISSED APPROACH: Climb to 1600 direct FOMRO WP and hold.
▼ Rwy 7R helicopter visibility reduction below ¾ SM NA.	

ATIS 132.875	DAYTONA APP CON 125.8 269.075	DAYTONA TOWER 120.7 257.8	GND CON 121.9 348.6	CLNC DEL 119.3
-----------------	----------------------------------	------------------------------	------------------------	-------------------



SE-3, 31 DEC 2020 to 28 JAN 2021

SE-3, 31 DEC 2020 to 28 JAN 2021