

LOC I-FMY	APP CRS	Rwy Idg
110.7	051°	5947
	TDZE	15
	Apt Elev	17

ILS or LOC RWY 5

PAGE FIELD (FMY)

ADF or RADAR required for procedure entry. ADF required for LOC only.

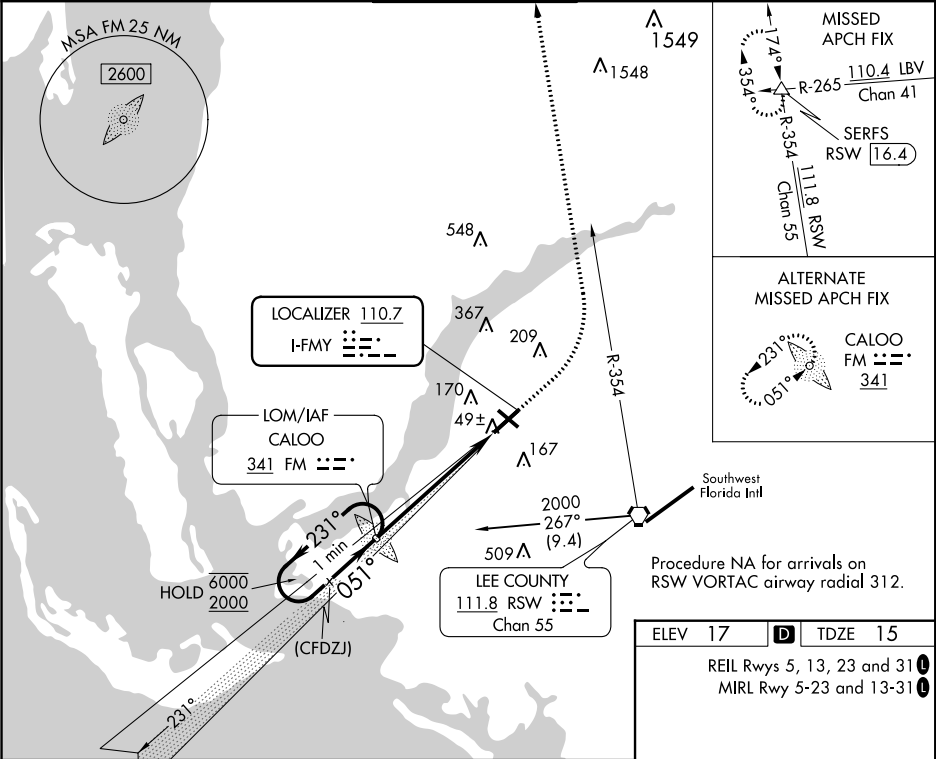
▼

▲

When Circling to Rwy 31 at night, operational VGSI required, remain on or above VGSI glidepath until threshold. Rwy 5 helicopter visibility reduction below ¾ SM NA.

MISSED APPROACH: Climb to 1000 then climbing left turn to 2600 on RSW R-354 to SERFS INT/RSW 16.4 DME and hold.

ATIS	FORT MYERS APP CON ★	PAGE TOWER ★	GND CON	CLNC DEL
123.725	126.8 306.2	119.0 (CTAF) 306.95	121.7	121.7



One Minute Holding Pattern

6000 ← 231°

2000 → 051°

GS 3.00° TCH 53

2000

051°

5.8 NM

1000

2600

RSW R-354

SERFS

CATEGORY	A	B	C	D
S-ILS 5	265-1 250 (300-1)			
S-LOC 5	460-1	445 (500-1)	460-1⅜	445 (500-1⅜)
CIRCLING	540-1	523 (600-1)	600-1½ 583 (600-1½)	680-2 663 (700-2)

ELEV 17

TDZE 15

REIL Rwy 5, 13, 23 and 31

MIRL Rwy 5-23 and 13-31

TWR 100

606 X 150

4972 X 150

051° 5.8 NM from FAF

FAF to MAP 5.8 NM

Knots	60	90	120	150	180
Min:Sec	5:48	3:52	2:54	2:19	1:56