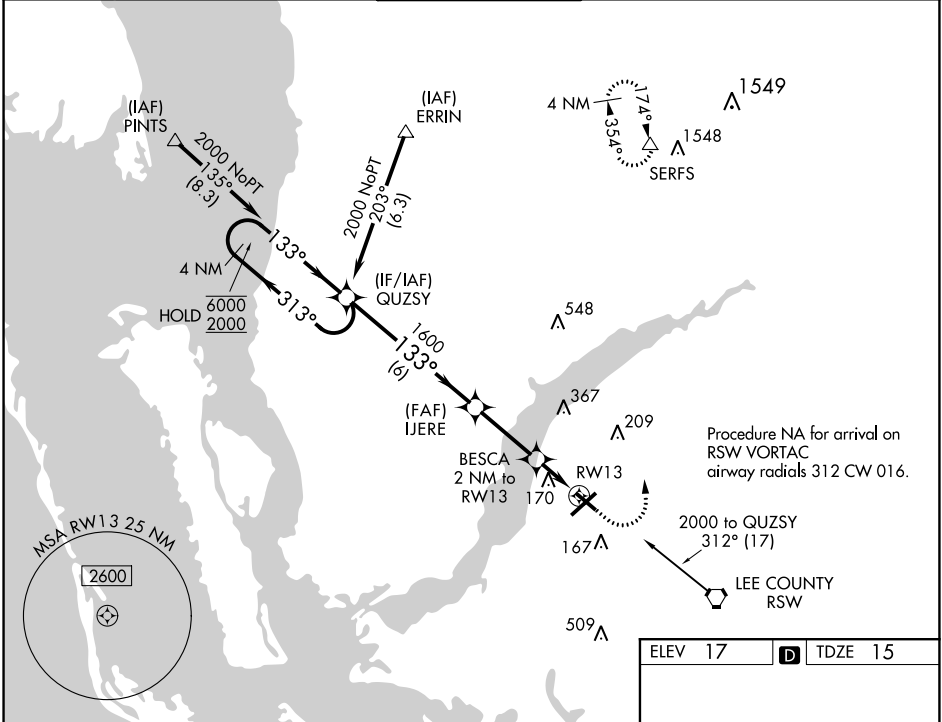


RNP APCH.		MISSED APPROACH: Climb to 500 then climbing left turn to 2600 direct SERFS and hold.	
When Circling to Rwy 31 at night, operational VGSI required, remain on or above VGSI glidepath until threshold. For uncompensated Baro-VNAV systems, LNAV/VNAV NA below -15°C or above 54°C.			
ATIS 123.725	FORT MYERS APP CON ★ 126.8 306.2	PAGE TOWER ★ 119.0 (CTAF) 0 306.95	GND CON 121.7
		CLNC DEL 121.7	



4 NM Holding Pattern		QUZSY	500	2600	SERFS
6000 ← 313°		133° →	133° to RWY13	TWR 100	
2000		133°	*LNAV only.		
GP 3.00°		1600	BESCA 2 NM to RWY13		
TCH 30		1600	*1.4 NM to RWY13		
			*680		
		6 NM	2.9 NM	0.6 NM	1.4 NM
CATEGORY	A	B	C	D	
LPV DA	265-1		250 (300-1)		
LNAV/VNAV DA	480-1½		465 (500-1½)		
LNAV MDA	480-1		465 (500-1½)		
CIRCLING	540-1 523 (600-1)		600-1½ 583 (600-1½)		
		680-2 663 (700-2)			

REIL Rwys 5, 13, 23 and 31

MIRL Rwy 5-23 and 13-31