

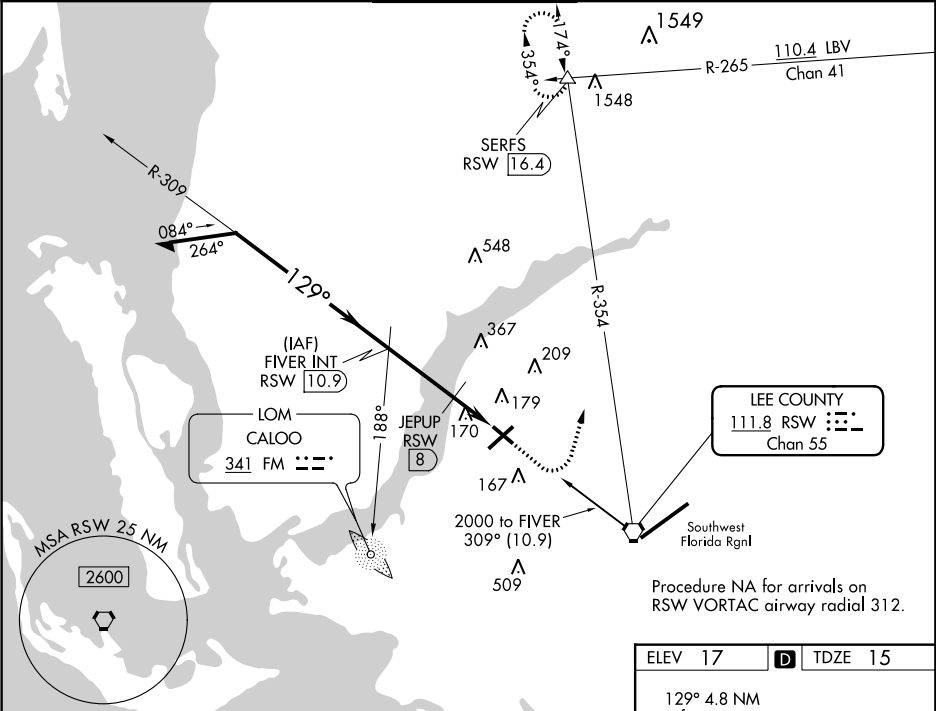
VORTAC RSW	APP CRS	Rwy Idg
111.8	129°	4297
Chan 55		TDZE 15
		Apt Elev 17

VOR RWY 13

PAGE FIELD (FMY)

ADF or DME required.	MISSED APPROACH: Climb to 1000 then climbing left turn to 2600 on RSW VORTAC R-354 to SERFS INT/RSW 16.4 DME and hold.
When Circling to Rwy 31 at night, operational VGSI required, remain on or above VGSI glidepath until threshold.	

ATIS	FORT MYERS APP CON*	PAGE TOWER*	GND CON	CLNC DEL
123.725	126.8 306.2	119.0 (CTAF) 306.95	121.7	121.7



Remain within 10 NM		FIVER INT RSW 10.9	1000	2600	SERFS
2000		309°	129°	1600	
		3.05° TCH 32	620	JEPUP RSW 8	RSW 7.5
		2.9 NM	0.5	1.4 NM	RSW 6.1
CATEGORY	A	B	C	D	
S-13	620-1	605 (700-1)	620-1 3/4	605 (700-1 3/4)	
CIRCLING	620-1	603 (700-1)	620-1 3/4	680-2	
JEPUP FIX MINIMUMS					
S-13	480-1	465 (500-1)	480-1 3/8	465 (500-1 3/8)	
CIRCLING	540-1	523 (600-1)	600-1 1/2	680-2	
			583 (600-1 1/2)	663 (700-2)	

ELEV 17	TDZE 15
129° 4.8 NM from FAF	
TWR 100	
400 X 150	
400 X 150	
REIL Rws 5, 13, 23 and 31	
MIRL Rwy 5-23 and 13-31	
FAF to MAP 4.8 NM	
Knots	60 90 120 150 180
Min:Sec	4:48 3:12 2:24 1:55 1:36