

LOC I-CRG <u>111.7</u>	APP CRS 321°	Rwy Idg TDZE Apt Elev	4008 41 41
----------------------------------	------------------------	-----------------------------	---------------------------------------

ILS or LOC RWY 32
JACKSONVILLE EXECUTIVE AT CRAIG (CRG)

T Night landing: Rwy 5 NA. DME or radar required. Helicopter
A visibility reduction below 1 SM NA. When local altimeter setting not received, use Jacksonville Intl altimeter setting and increase all DA 32 feet and all MDA 40 feet. For inop MALS, increase S-LOC 32 Cats C/D visibility to 1¼ mile. For inop MALS, when using Jacksonville Intl altimeter setting, increase S-LOC 32 Cats C/D visibility to 1½ mile.

MALSR



MISSED APPROACH: Climb to 700 then climbing right turn to 1900 on heading 180° and on CRG VORTAC R-139 to JEVAG/CRG VORTAC 11.8 DME/RADAR and hold.

ATIS 125.4	JACKSONVILLE APP CON 124.9 308.4	CRAIG TOWER ★ 132.1 (CTAF) 0 269.525	GND CON 121.8	CLNC DEL 118.35	UNICOM 122.95
---------------	-------------------------------------	---	------------------	--------------------	------------------

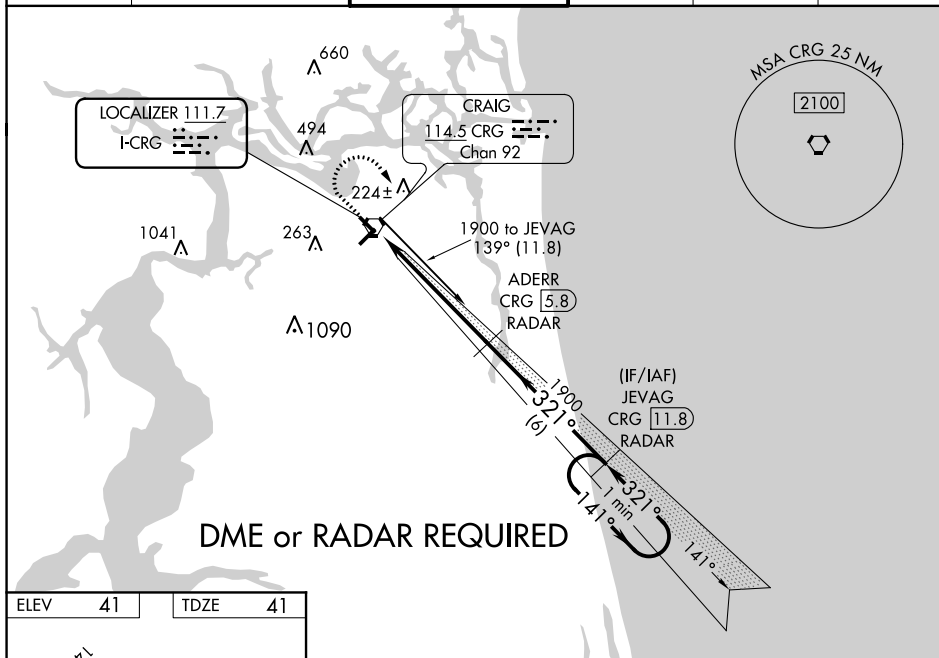


Diagram illustrating the FAF to MAP segment of the flight path. The path is defined by a 321° heading, 5.7 NM from the FAF. Key landmarks and distances are marked: 4008 X 100, TWR 122, 103, 4004 X 100, and 321° 5.7 NM from FAF.

FAF to MAP 5.7 NM					
Knots	60	90	120	150	180
Min:Sec	5:42	3:48	2:51	2:17	1:54

