

HI-TACAN RWY 10

TACAN NIP Chan 19	APCH CRS 087°	Rwy Idg 8006 TDZE 21 Arpt Elev 23
-----------------------------	-------------------------	--

JAL-209 [USN] JACKSONVILLE NAS (TOWERS FIELD) (KNIP)

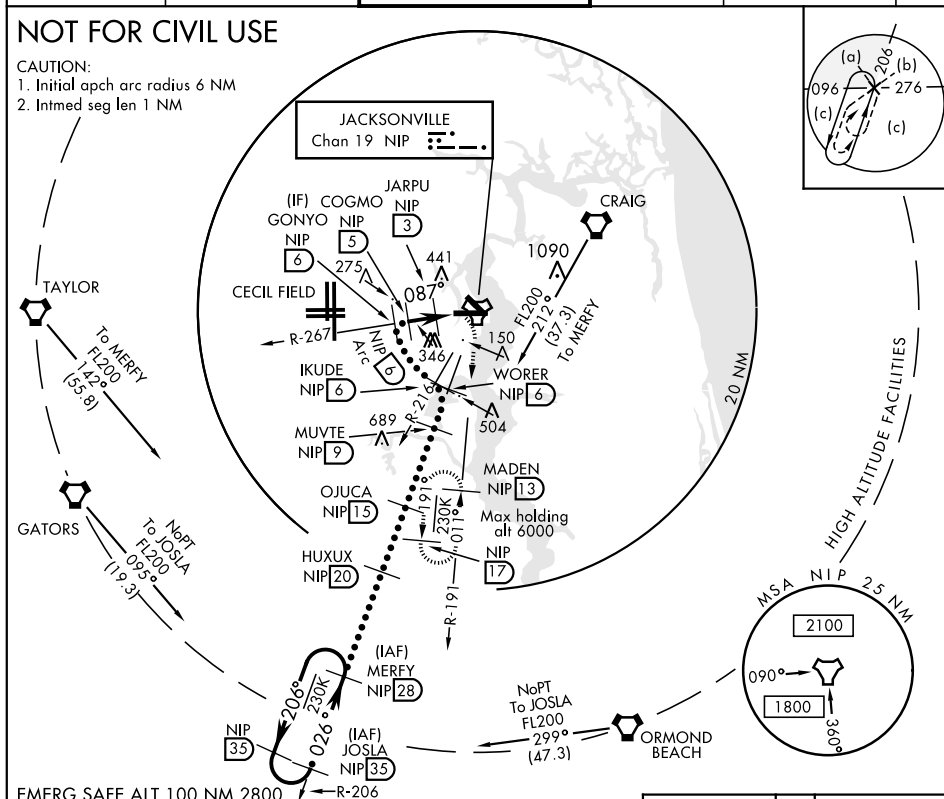
<p>▼ * When ALS inop, increase CAT CDE vis to 1½ miles.</p>	<p>ALSF-1</p>	<p>MISSED APPROACH: Climb to 2000 direct NIP TACAN, outbound R-191 to MADEN and hold.</p>
--	---	--

ATIS 124.35 290.425	JACKSONVILLE APP CON 127.775 377.075	NAVY JACKSONVILLE TOWER 125.15 (CTAF) 340.2	GND CON 128.6 336.4	CLNC DEL 134.775 0353.675	ASR/ PAR
------------------------	---	--	------------------------	------------------------------	-------------

NOT FOR CIVIL USE

CAUTION:

1. Initial apch arc radius 6 NM
2. Intmed seg len 1 NM



EMERG SAFE ALT 100 NM 2800

Profile View: Shows the vertical profile of the ILS approach. The horizontal axis represents distance from the runway (0 to 1.7 NM). The vertical axis represents altitude in feet (0 to 13,000). Key points include: MERFY R-206 (13,000 ft), HUXUX (13,000 ft), MUUTE (13,000 ft), OJUCA (13,000 ft), WORER R-206 (13,000 ft), IKUDE R-216 (13,000 ft), GONYO R-267 (13,000 ft), COGMO (13,000 ft), JARPU (13,000 ft), NIP (13,000 ft), TACAN (13,000 ft), and HVIN (13,000 ft). The vertical axis also shows altitudes of 12,970 ft (TCH 51), 8,000 ft, 4,000 ft, 1,700 ft, 1,600 ft, 1,500 ft, and 1,400 ft. The horizontal axis shows distances of 2 NM, 1.7 NM, and 1.5 NM.

Plan View: Shows the horizontal profile of the ILS approach. The horizontal axis represents distance from the runway (0 to 1.7 NM). The vertical axis represents distance from the runway (0 to 1.7 NM). Key points include: MERFY R-206 (13,000 ft), HUXUX (13,000 ft), MUUTE (13,000 ft), OJUCA (13,000 ft), WORER R-206 (13,000 ft), IKUDE R-216 (13,000 ft), GONYO R-267 (13,000 ft), COGMO (13,000 ft), JARPU (13,000 ft), NIP (13,000 ft), TACAN (13,000 ft), and HVIN (13,000 ft). The vertical axis also shows altitudes of 12,970 ft (TCH 51), 8,000 ft, 4,000 ft, 1,700 ft, 1,600 ft, 1,500 ft, and 1,400 ft. The horizontal axis shows distances of 2 NM, 1.7 NM, and 1.5 NM.

Table:

CATEGORY	C	D	E
S-10 *	420-3/4	399 (400-3/4)	
CIRCLING	560-1 1/2 537 (600-1 1/2)	800-2 1/2 777 (800-2 1/2)	920-3 897 (900-3)

Visual Aids: Shows the visual aids for the ILS approach. The horizontal axis represents distance from the runway (0 to 1.7 NM). The vertical axis represents distance from the runway (0 to 1.7 NM). Key points include: MERFY R-206 (13,000 ft), HUXUX (13,000 ft), MUUTE (13,000 ft), OJUCA (13,000 ft), WORER R-206 (13,000 ft), IKUDE R-216 (13,000 ft), GONYO R-267 (13,000 ft), COGMO (13,000 ft), JARPU (13,000 ft), NIP (13,000 ft), TACAN (13,000 ft), and HVIN (13,000 ft). The vertical axis also shows altitudes of 12,970 ft (TCH 51), 8,000 ft, 4,000 ft, 1,700 ft, 1,600 ft, 1,500 ft, and 1,400 ft. The horizontal axis shows distances of 2 NM, 1.7 NM, and 1.5 NM.

JACKSONVILLE, FLORIDA

30°14'N-81°41'W

JACKSONVILLE NAS (TOWERS FIELD) (KNIP)

HI-TACAN RWY 10

SE-3, 31 DEC 2020 to 28 JAN 2021

SE-3, 31 DEC 2020 to 28 JAN 2021