

JACKSONVILLE, FLORIDA

RNAV (GPS) Z RWY 28

WAAS CH 46924 W28A	APCH CRS 276°	Rwy Idg 9003 TDZE 13 Arpt Elev 23
---------------------------------	-------------------------	--

AL-209 (USN)

JACKSONVILLE NAS (TOWERS FLD) (KNIP)

T * When ALS inop, increase CAT ABCD to 7/8 mile.
 ** When ALS inop, increase CAT AB vis to 1 mile, CAT CD vis to 1 1/8 miles.

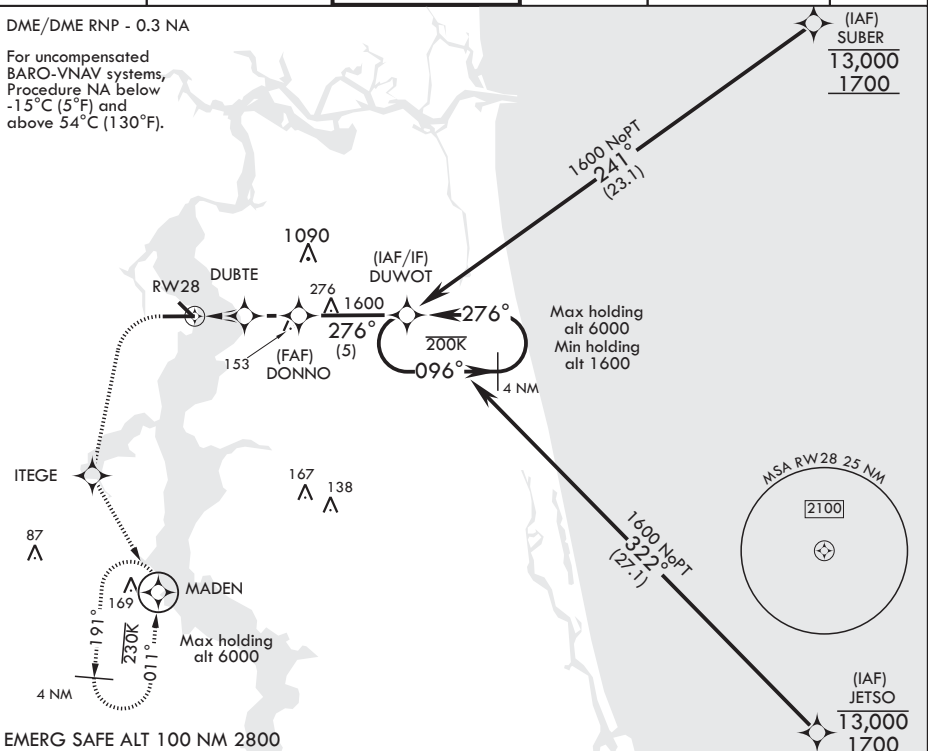
SALS

MISSED APPROACH: Climb to 600 then climbing left turn to 2000 direct ITEGE, track 156° to MADEN and hold.

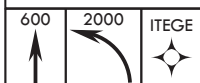
ATIS 124.35 290.425	APP CON/DEP CON 127.775 377.075	TOWER 125.15 (CTAF) 340.2	GND CON 128.6 336.4	CLNC DEL 134.775 0 353.675	ASR/PAR
------------------------	------------------------------------	------------------------------	------------------------	-------------------------------	---------

DME/DME RNP - 0.3 NA

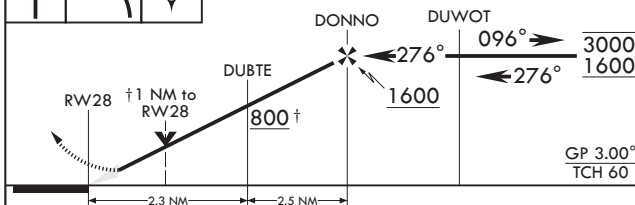
For uncompensated
BARO-VNAV systems,
Procedure NA below
-15°C (5°F) and
above 54°C (130°F).



EMERG SAFE ALT 100 NM 2800

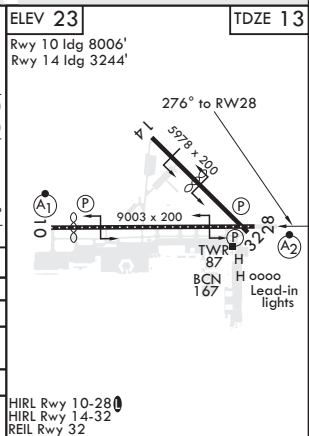


† LNAV only



GP 3.00°
TCH 60

CATEGORY	A	B	C	D
LPV DA	213-¾	200	(200-¾)	
LNAV/VNAV DA*	280-¾ 267 (300-¾)	291-¾ 278 (300-¾)	299-¾ 286 (300-¾)	310-¾ 297 (300-¾)
LNAV MDA**	400-¾ 387	(400-¾)	420-¾ 387	(400-¾)
C CIRCLING	500-1 477	(500-1)	560-1½ 537 (600-1½)	800-2½ 777 (800-2½)



JACKSONVILLE, FLORIDA

30°14'N - 81°41'W

JACKSONVILLE NAS (TOWERS FLD) (KNIP)

RNAV (GPS) Z RWY 28

Orig 10OCT19

SE-3, 31 DEC 2020 to 28 JAN 2021

SE-3, 31 DEC 2020 to 28 JAN 2021