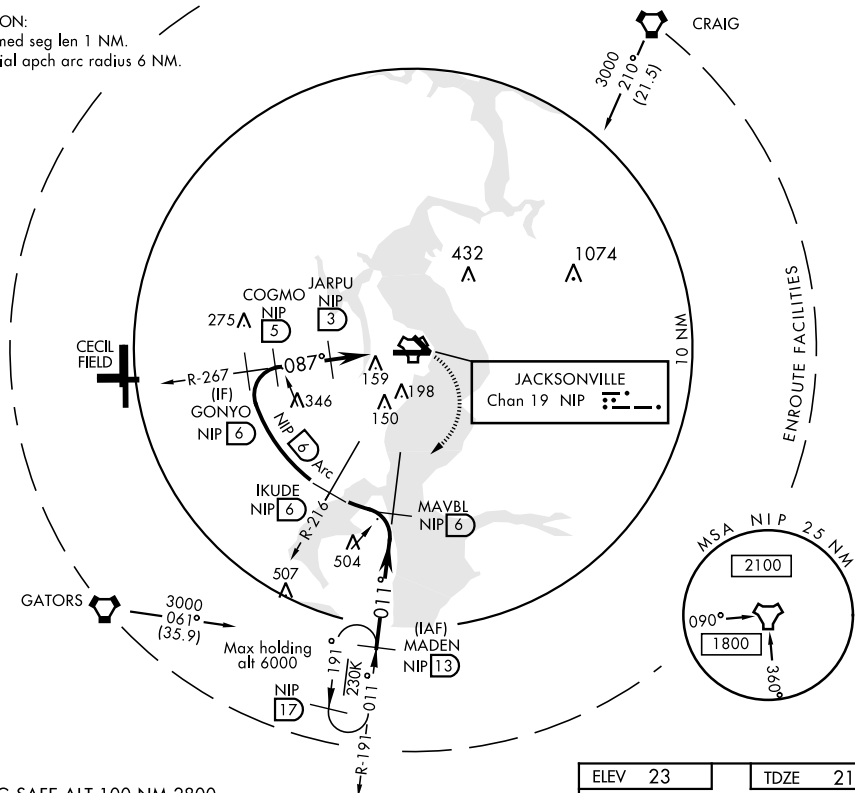


TACAN RWY 10

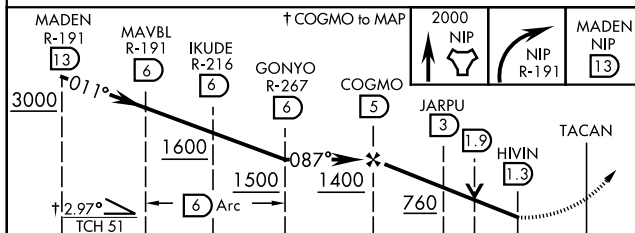
TACAN Chan 19	NIP 087°	APCH CRS	Rwy Idg 8006 TDZE 21 Arpt Elev 23	AL-209 [USN]	JACKSONVILLE NAS (TOWERS FIELD) (KNIP)	
<div><div><div></div><div></div></div><div><div></div><div></div></div></div> <p>* When ALS inop, increase CAT AB vis to 1 mile, CAT CD vis to 1½ miles.</p>					<div><div>ALSF-1</div><div><div>A1</div><div></div></div></div>	MISSED APPROACH: Climb to 2000 direct NIP TACAN and turn right outbound R-191 to MADEN and hold.
ATIS 124.35 290.425	JACKSONVILLE APP CON 127.775 377.075	NAVY JACKSONVILLE TOWER 125.15 (CTAF) 340.2	GND CON 128.6 336.4	CLNC DEL 134.775 0353.675	ASR/ PAR	

CAUTION:

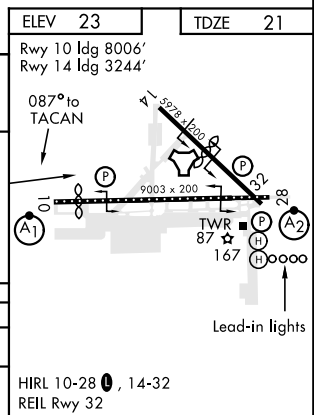
1. Intmed seg len 1 NM.
2. Initial apch arc radius 6 NM.



EMERG SAFE ALT 100 NM 2800



				2.0 NM		1.7 NM		0.5	
CATEGORY	A		B		C		D		
S-10 *	420-½ 399 (400-½)				420-¾ 399 (400-¾)				
CIRCLING	500-1 477 (500-1)				560-1½ 537 (600-1½)		800-2½ 777 (800-2½)		



TACAN RWY 10