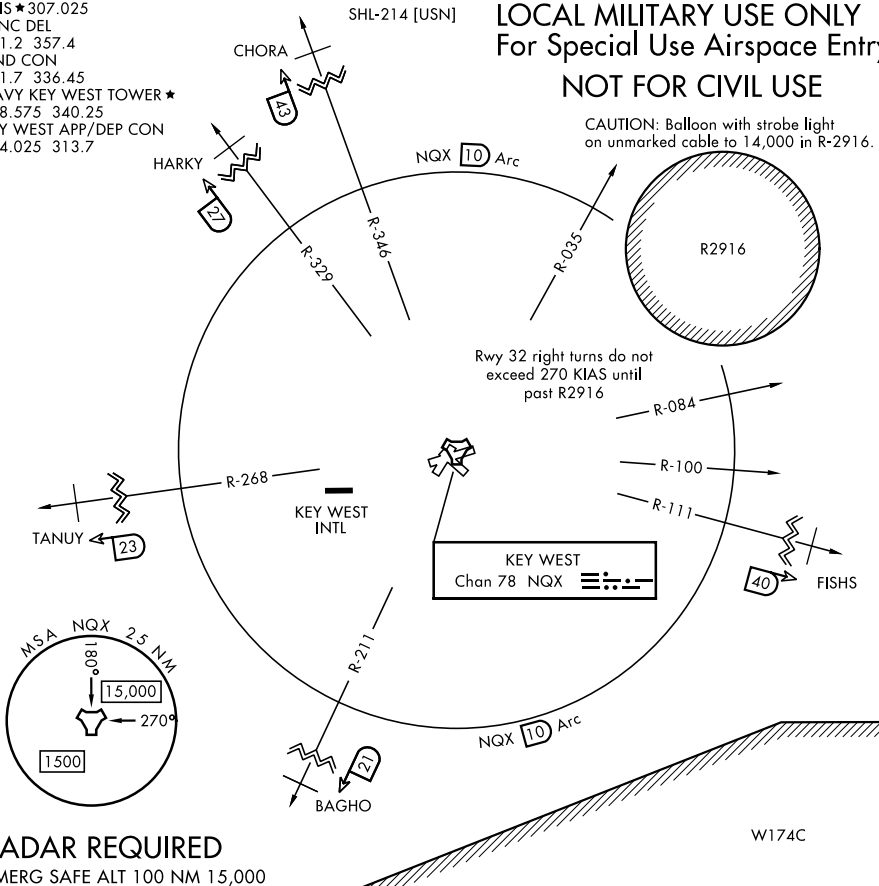


ATIS ★ 307.025
CLINC DEL
121.2 357.4
GND CON
121.7 336.45
NAVY KEY WEST TOWER ★
118.575 340.25
KEY WEST APP/DEP CON
124.025 313.7

LOCAL MILITARY USE ONLY
For Special Use Airspace Entry
NOT FOR CIVIL USE

CAUTION: Balloon with strobe light
on unmarked cable to 14,000 in R-2916.



RADAR REQUIRED
EMERG SAFE ALT 100 NM 15,000

DEPARTURE ROUTE DESCRIPTION

TAKE-OFF RWY 4, 8, 14, 22, 26*32: Climbing via assigned heading, thence radar vectors to assigned departure fix. Cross 10 DME at or above 10,000, cross departure fix as assigned by ATC.

LOST COMMUNICATIONS/NON-RADAR

If radar vectors are not received or available by NQX TACAN 8 DME, climb to 12,000, fly assigned departure heading to intercept NQX 10 DME arc. Arc to respective departure radial, then via departure radial to assigned departure fix.
Do not ARC northeast of NQX TACAN between R-035 clockwise to R-084.

SE-3, 31 DEC 2020 to 28 JAN 2021

SE-3, 31 DEC 2020 to 28 JAN 2021