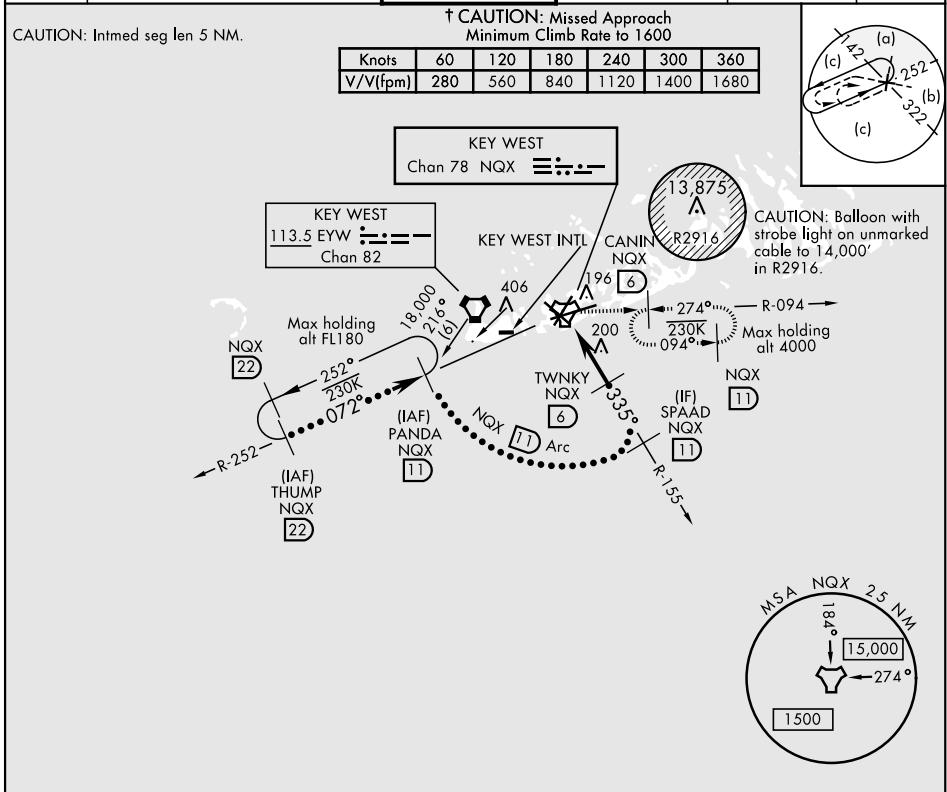


HI-TACAN Z RWY 32

TACAN	NQX	APCH CRS	Rwy Idg	7001	JAL-214 [USN]	KEY WEST NAS (BOCA CHICA FLD)	(KNQX)
Chan	78	335°	TDZE	4			
			Arpt Elev	6			

† MISSED APPROACH: Climb to 1600 via NQX TACAN R-155 to NQX, then climbing right turn to intercept NQX R-094 to CANIN and hold.

ATIS ★	NAVY KEY WEST APP CON	NAVY KEY WEST TOWER ★	GND CON	CLNC DEL	ASR/PAR
307.025	124.025 313.7	118.575 340.25	121.7 336.45	121.2 357.4	



EMERG SAFE ALT 100 NM 15,000

ELEV	6	TDZE	4
------	---	------	---

THUMP R-252 22

PANDA R-252 11

SPAAD R-155 11

TWNKY 6

JATAL 3

TACAN

NOLEE 1.5

1600

1600

720

335°

335°

3.0 NM

1.5 NM

6

18,000

Or as directed by ATC

10,000

2.99°

TCH 45

CATEGORY	C	D	E
S-32	300-1	296 (300-1)	
CIRCLING	500-1½ 494 (500-1½)	560-2	554 (600-2)

HIRL all Rwy

HI-TACAN Z RWY 32