

20142

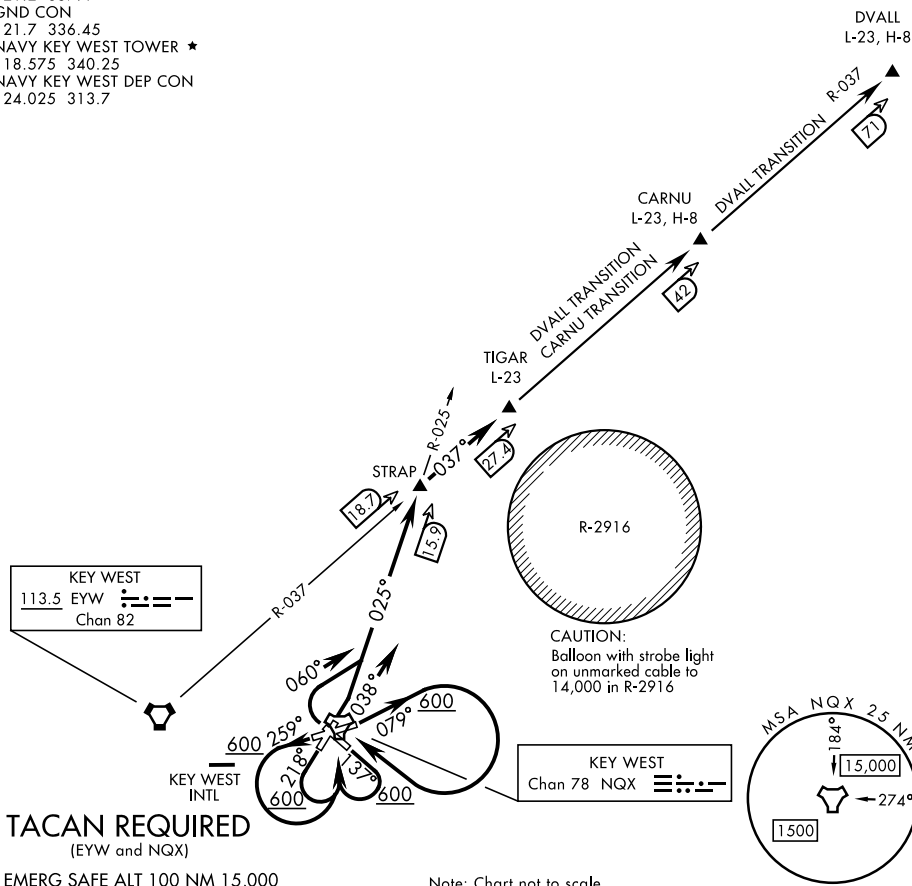
TIGAR THREE DEPARTURE (OBSTACLE) (TIGAR3.TIGAR)

KEY WEST NAS (BOCA CHICA FLD) (KNQX)

KEY WEST, FLORIDA

ATIS ★ 307.025
CLNC DEL
121.2 357.4
GND CON
121.7 336.45
NAVY KEY WEST TOWER ★
118.575 340.25
NAVY KEY WEST DEP CON
124.025 313.7

SHL-214 [USN]



TACAN REQUIRED
(EYW and NQX)

EMERG SAFE ALT 100 NM 15,000

Note: Chart not to scale

DEPARTURE ROUTE DESCRIPTION

TAKE-OFF RWY 4: Climb heading 038° turn right to intercept NQX TACAN R-025, then...

TAKE-OFF RWY 8: Climb heading 079° to 600, then climbing right turn direct NQX TACAN then...

TAKE-OFF RWY 14: Climb heading 137° to 600, then climbing right turn direct NQX TACAN then...

TAKE-OFF RWY 22: Climb heading 218° to 600, then climbing left turn direct NQX TACAN, then...

TAKE-OFF RWY 26: Climb heading 259° to 600, then climbing left turn direct NQX TACAN, then...

TAKE-OFF RWY 32: Climbing right turn heading 060° to intercept NQX TACAN R-025, then...

...via NQX R-025 to STRAP, then via EYW VORTAC R-037 to TIGAR, then via assigned transition or route.

CARNU TRANSITION: via EYW R-037 to CARNU.

DVALL TRANSITION: via EYW R-037 to DVALL.

TIGAR THREE DEPARTURE (OBSTACLE) (TIGAR3.TIGAR)

KEY WEST, FLORIDA

Orig 21MAY20

KEY WEST NAS (BOCA CHICA FLD) (KNQX)