

MELBOURNE, FLORIDA

AL-252 (FAA)

20338

WAAS CH <b>50101</b> <b>W27A</b>	APP CRS <b>274°</b>	Rwy Idg <b>6000</b> TDZE <b>32</b> Apt Elev <b>33</b>
--	------------------------	---

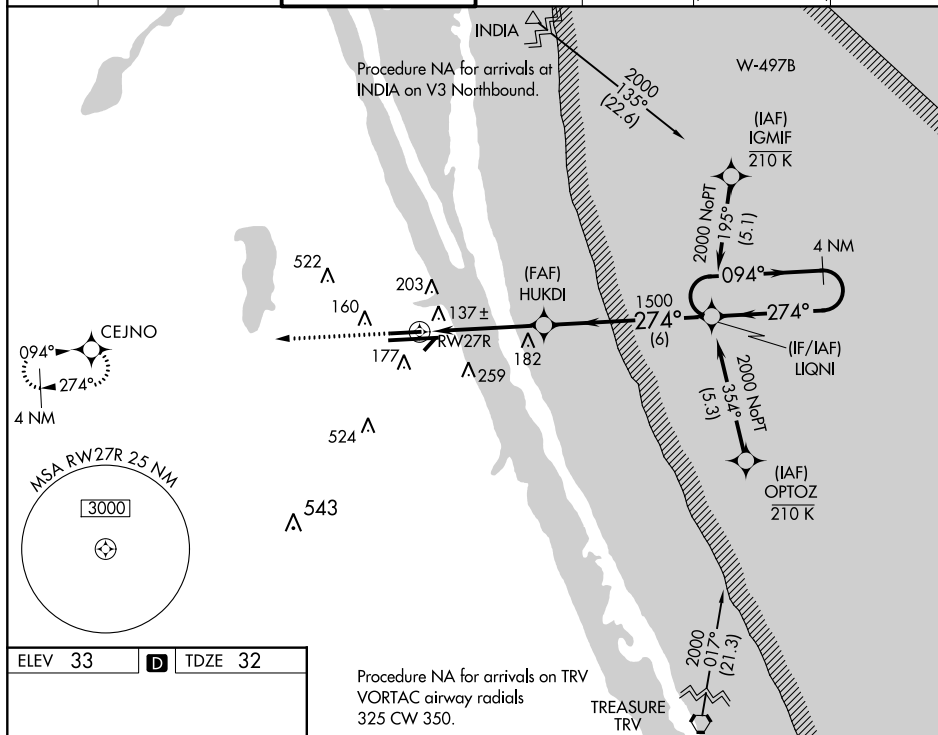
RNAV (GPS) RWY 27R  
MELBOURNE INTL (MLB)

RNP APCH.

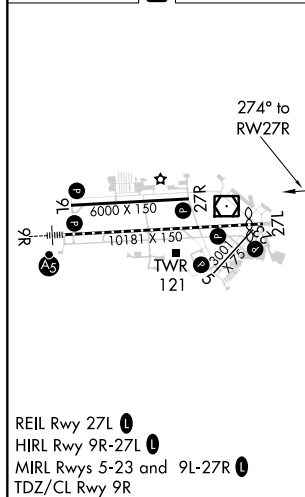
**T** For uncompensated Baro-VNAV systems, LNAV/VNAV  
**A** NA below -15°C (5°F) or above 54°C (130°F).

MISSED APPROACH: Climb to 2000 direct CEJNO and hold.

ATIS <b>132.55</b>	ORLANDO APP CON <b>132.65 281.425</b>	MELBOURNE TOWER ★ <b>118.2(CTAF) 0 257.8</b>	GND CON <b>121.9</b>	CLNC DEL <b>121.9</b>	CLNC DEL <b>132.65</b> (When twr closed)	UNICOM <b>122.95</b>
-----------------------	--	---	-------------------------	--------------------------	--	-------------------------



ELEV 33	<b>D</b>	TDZE 32
---------	----------	---------



**CEJNO**

VGSI and RNAV glidepath not coincident (VGSI Angle 3.00/TCH 40).

4 NM Holding Pattern

\*LNAV only.

RW27R

1 NM

3.5 NM

6 NM

HUKDI 1500

LQNI

274°

094° →

← 274°

2000

GP 3.00° TCH 55

CATEGORY	A	B	C	D
LPV DA	232- $\frac{3}{4}$ 200 (200- $\frac{3}{4}$ )			
LNAV/VNAV DA	443-1 $\frac{3}{8}$ 411 (500-1 $\frac{3}{8}$ )			
LNAV MDA	400-1 368 (400-1)			
<b>C</b> CIRCLING	500-1 467 (500-1)	560-1 527 (600-1)	680-1 $\frac{3}{4}$ 647 (700-1 $\frac{3}{4}$ )	880-2 $\frac{3}{4}$ 847 (900-2 $\frac{3}{4}$ )

MELBOURNE, FLORIDA

Amdt 1B 21MAY20

28°06'N-80°39'W

MELBOURNE INTL (MLB)

RNAV (GPS) RWY 27R

SE-3, 31 DEC 2020 to 28 JAN 2021

SE-3, 31 DEC 2020 to 28 JAN 2021